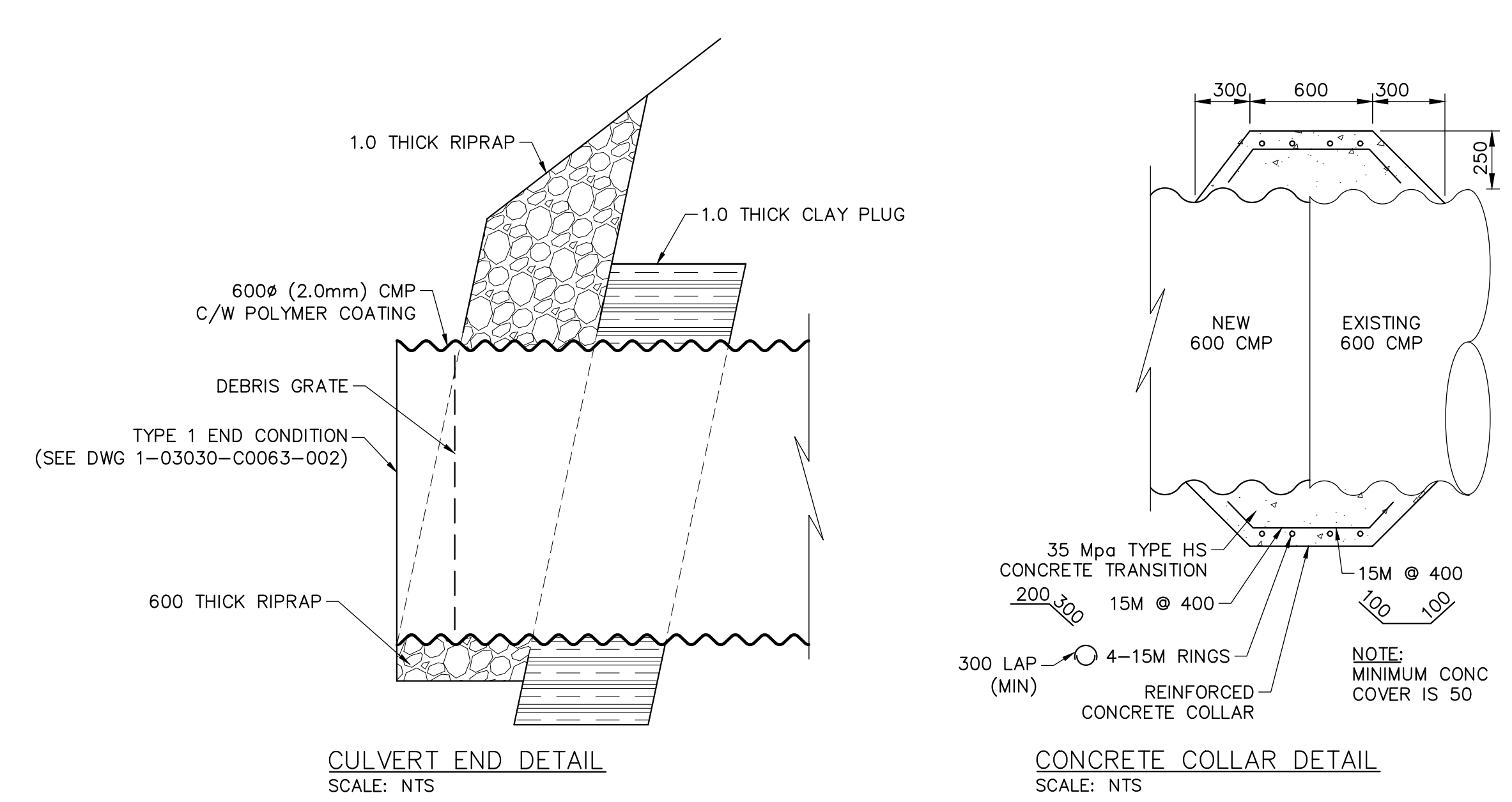


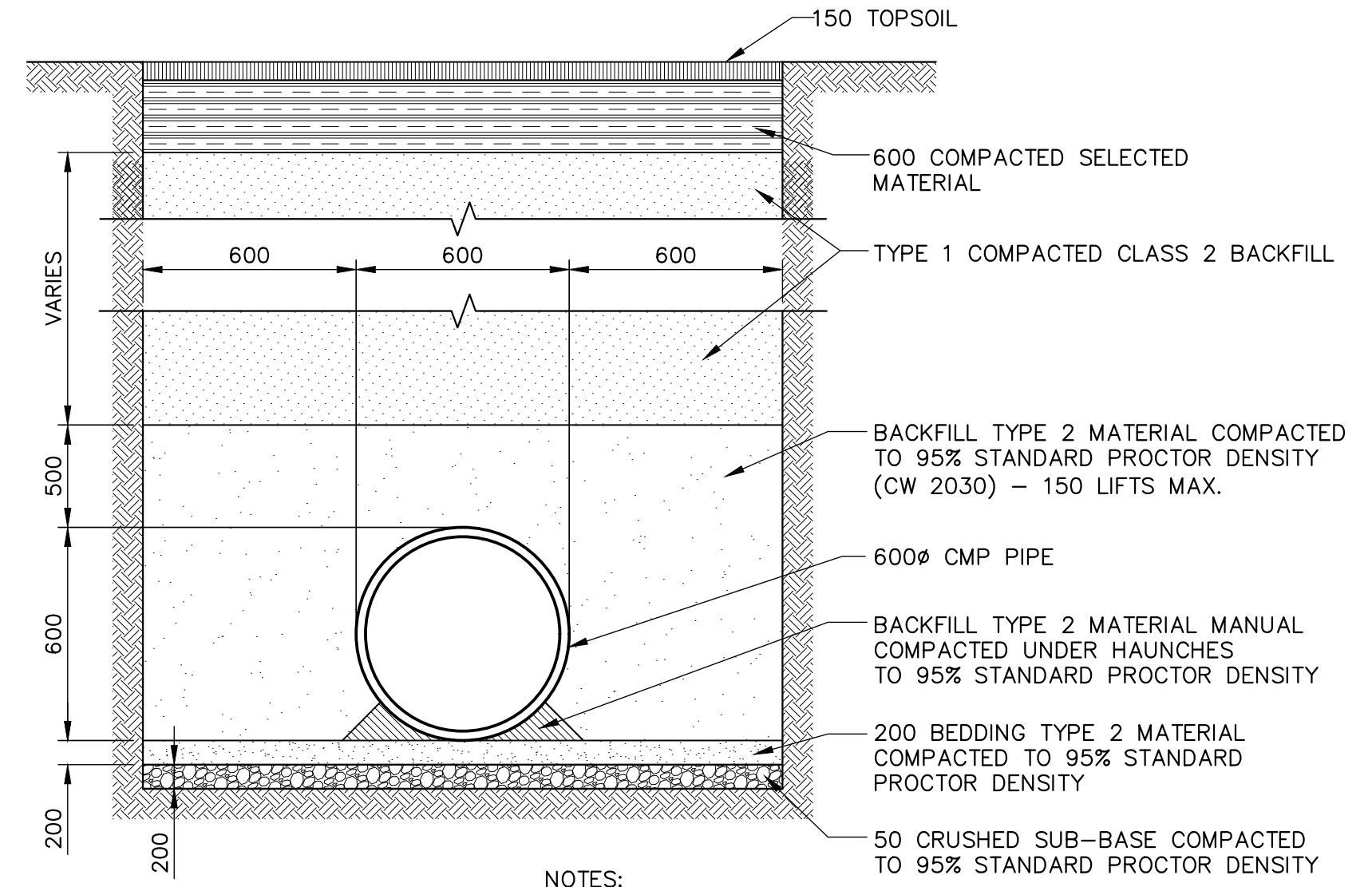
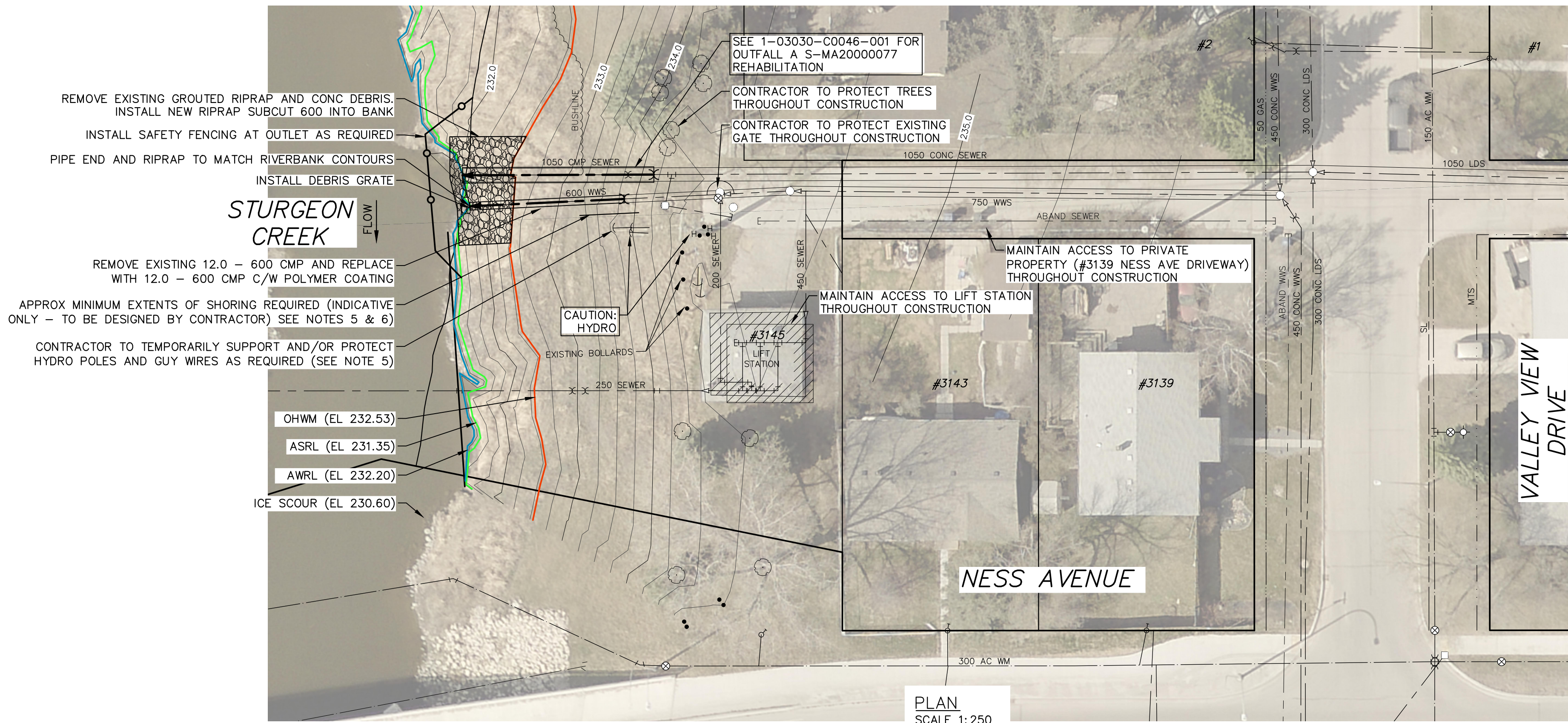
NOTE: CHAINAGES SHOWN ARE ALONG  $\phi$  EXISTING 600 OUTFALL

SEE 1-03030-C0046-001 FOR 3145 NESS OUTFALL A S-MA20000077 REHABILITATION



CULVERT END DETAIL  
SCALE: NTS

CONCRETE COLLAR DETAIL  
SCALE: NTS



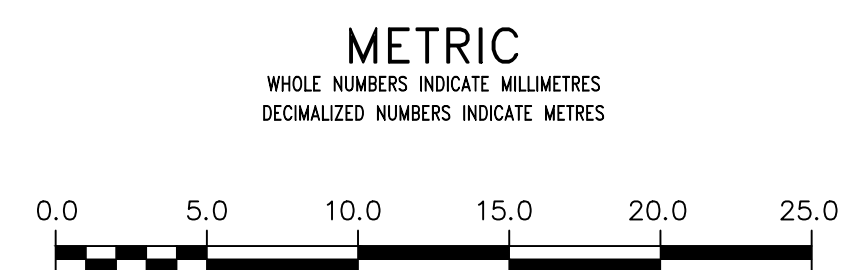
- NOTES:
- NO STOCKPILING OF MATERIAL WITHIN 76.0 OF (ASRL). ALL EXCAVATED MATERIAL TO BE REMOVED FROM SITE.
  - CONTRACTOR TO PROVIDE TEMPORARY SHORING WHERE REQUIRED IN ACCORDANCE WITH SPECIFICATIONS.
  - CONTRACTOR TO SUPPLY HEATING AND HOARDING TO ACHIEVE COMPACTION OF BEDDING AND BACKFILL.

BACKFILL DETAIL  
SCALE: NTS

- NOTES:
- ALL EXCAVATED MATERIAL WITHIN 76.0 OF THE ASRL MUST BE REMOVED FROM SITE (NO STOCKPILING).
  - CONSTRUCT CLAY COFFERDAM AT CREEK AS REQUIRED (SEE DWG 1-03030-C0063-001).
  - CONTRACTOR TO RESTORE SITE, INCLUDING ROADS, CURBS, AND LANDSCAPING, TO PRE-CONSTRUCTION CONDITION.
  - CONTRACTOR TO PROVIDE AND INSTALL PROPER WARNING SIGNS CONCERNING WORK SITE.
  - COORDINATION WITH HYDRO FOR TEMPORARY SUPPORT OF HYDRO POLES AND GUY WIRES IS THE RESPONSIBILITY OF THE CONTRACTOR.
  - TO ENSURE PROTECTION OF EXISTING HYDRO UTILITIES, ENGINEERED TRENCH BOX AND/OR SHORING SHALL BE USED FOR PIPE INSTALLATION. SHORING IS TO BE DESIGNED AND SEALED BY A PROFESSIONAL ENGINEER.



FOR INDEX PAGE SEE DWG 1-03030-D0009-001



**WARNING**  
IF POWER EQUIPMENT OR EXPLOSIVES ARE TO BE USED FOR EXCAVATION ON THIS PROJECT THE CONTRACTOR MUST:  
1) NOTIFY THE GAS COMPANY OF THE PROPOSED LOCATION OF EXCAVATION.  
2) TAKE PRECAUTION TO AVOID DAMAGE TO GAS COMPANY INSTALLATIONS.  
SEE PROVINCIAL REGULATION 210/72 FOR DETAILS

**LOCATION APPROVED**  
UNDERGROUND STRUCTURES  
SUPV. U/G STRUCTURES COMMITTEE DATE  
NOTE:  
LOCATION OF UNDERGROUND STRUCTURES AS SHOWN ARE BASED ON THE BEST INFORMATION AVAILABLE BUT NO GUARANTEE IS GIVEN THAT ALL EXISTING UTILITIES ARE SHOWN OR THAT THE GIVEN LOCATIONS ARE EXACT. CONFIRMATION OF EXISTENCE AND EXACT LOCATION OF ALL SERVICES MUST BE OBTAINED FROM THE INDIVIDUAL UTILITIES BEFORE PROCEEDING WITH CONSTRUCTION.

B.M. ELEV.	NO.	ISSUED FOR TENDER	DATE	BY
	0	ISSUED FOR TENDER	2021 11 05	RBO
		REVISIONS	DATE	BY

		DESIGNED BY	NGV	CHECKED BY	RBO
		DRAWN BY	GEL	APPROVED BY	RBO
SCALE:		RELEASED FOR CONSTRUCTION			
HORIZONTAL 1:250		DATE			
VERTICAL 1:50		2021 11 04			

ENGINEER'S SEAL  
CONSULTANT DRAWING NUMBER  
1-03030-C0047-001

**THE CITY OF WINNIPEG**  
 WATER AND WASTE DEPARTMENT  
 ENGINEERING DIVISION  
 2020-2021 OUTFALL PROGRAM  
 RENEWAL AND REHABILITATION  
**3145 NESS AVENUE OUTFALL B**  
 PLAN AND PROFILE  
 S-MA20000072

SHEET 10 OF 26  
 CITY DRAWING NUMBER  
 1-03030-C0047-001