

NOTE: CHAINAGES SHOWN ARE ALONG CL EXISTING OUTFALL



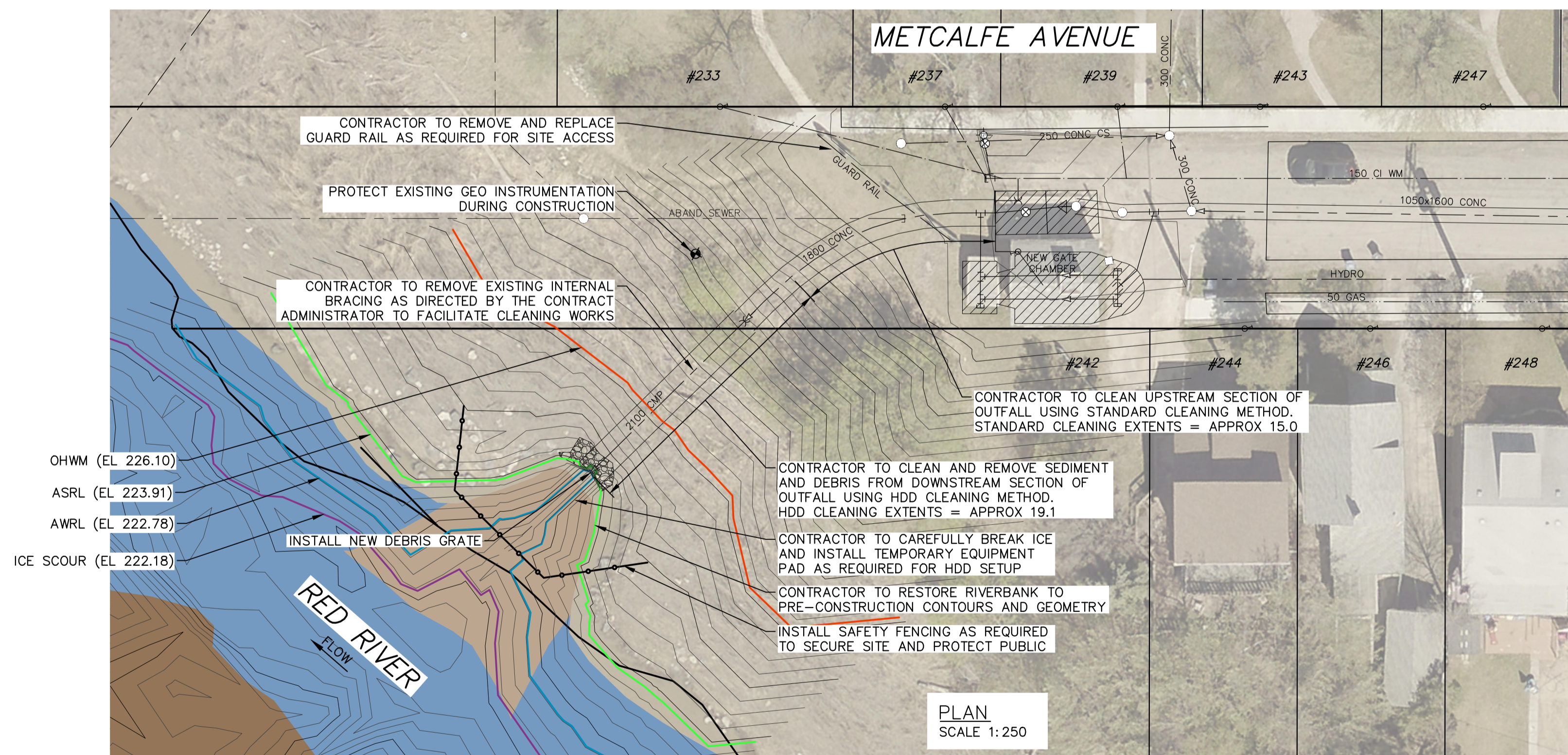
LOOKING INTO PIPE FROM OUTLET
DATE 2021-03

NOTES:

1. ALL EXCAVATED MATERIAL WITHIN 107.0 OF THE ASRL MUST BE REMOVED FROM SITE (NO STOCKPILING).
2. CONSTRUCT TEMPORARY CLAY COFFERDAM AT RIVER AS REQUIRED TO FACILITATE CLEANING.
3. CONTRACTOR TO PROTECT EXISTING TREES AND GEO INSTRUMENTATION THROUGHOUT CONSTRUCTION.
4. CONTRACTOR TO PROVIDE AND INSTALL PROPER WARNING SIGNS ALONG PEDESTRIAN PATHWAY CONCERNING WORK SITE.
5. CONTRACTOR TO PROVIDE ALTERNATE PEDESTRIAN ACCESS AS REQUIRED.
6. PERMITS AS REQUIRED FOR CONSTRUCTION OF TEMPORARY ACCESS IS THE RESPONSIBILITY OF THE CONTRACTOR.
7. ALL MATERIALS, INCLUDING TEMPORARY MATERIAL PLACED TO CONSTRUCT EQUIPMENT PADS, MUST BE REMOVED FROM SITE FOLLOWING COMPLETION OF WORKS.
8. REMOVE EXISTING DEBRIS GRATE AS REQUIRED. NEW DEBRIS GRATE TO BE INSTALLED FOLLOWING COMPLETION OF CLEANING AND INSPECTION.

SUBSTRATE LEGEND

	COBBLE/BOULDER/GRAVEL
	COBBLE/CLAY WITH GRAVEL
	CLAY

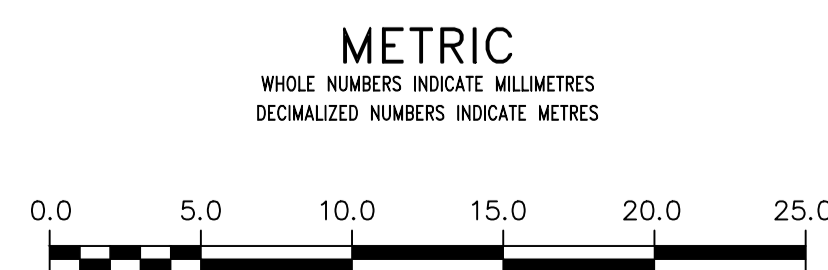


SUBSTRATE TYPES BELOW ICE SCOUR AFFECTED BY THE PROJECT

EXISTING SUBSTRATE	PERMANENT AREA (m ²)	TEMPORARY AREA (m ²)
COBBLE/BOULDER/GRAVEL	0.0	0.0
COBBLE/CLAY WITH GRAVEL	0.0	0.0
CLAY	0.0	0.0
TOTAL AREA AFFECTED	0.0	0.0

ENGINEERS
GEOSCIENTISTS
MANITOBA
Certificate of Authorization
KGS Group
No. 245

FOR INDEX PAGE SEE DWG
1-03030-D0009-001



WARNING
IF POWER EQUIPMENT OR EXPLOSIVES ARE TO BE USED FOR EXCAVATION ON THIS PROJECT THE CONTRACTOR MUST:
1) NOTIFY THE GAS COMPANY OF THE PROPOSED LOCATION OF EXCAVATION.
2) TAKE PRECAUTION TO AVOID DAMAGE TO GAS COMPANY INSTALLATIONS.
SEE PROVINCIAL REGULATION 210/72 FOR DETAILS

LOCATION APPROVED
UNDERGROUND STRUCTURES
SUPV. U/G STRUCTURES COMMITTEE DATE _____
NOTE:
LOCATION OF UNDERGROUND STRUCTURES AS SHOWN ARE BASED ON THE BEST INFORMATION AVAILABLE BUT NO GUARANTEE IS GIVEN THAT ALL EXISTING UTILITIES ARE SHOWN OR THAT THE GIVEN LOCATIONS ARE EXACT. CONFIRMATION OF EXISTENCE AND EXACT LOCATION OF ALL SERVICES MUST BE OBTAINED FROM THE INDIVIDUAL UTILITIES BEFORE PROCEEDING WITH CONSTRUCTION.

B.M.	ELEV.	NO.	ISSUED FOR TENDER	DATE	BY

KGS GROUP	
DESIGNED BY NGV	CHECKED BY
DRAWN BY GEL	APPROVED BY
SCALE: HORIZONTAL 1:250 VERTICAL 1:50	RELEASED FOR CONSTRUCTION
DATE 2021 11 04	DATE

ENGINEER'S SEAL
CONSULTANT DRAWING NUMBER
1-03030-C0051-001

THE CITY OF WINNIPEG
WATER AND WASTE DEPARTMENT
ENGINEERING DIVISION

**2020-2021 OUTFALL PROGRAM
CLEANING
242 METCALFE AVENUE OUTFALL
PLAN AND PROFILE
S-MA70011115**

SHEET 14 OF 26
CITY DRAWING NUMBER
1-03030-C0051-001