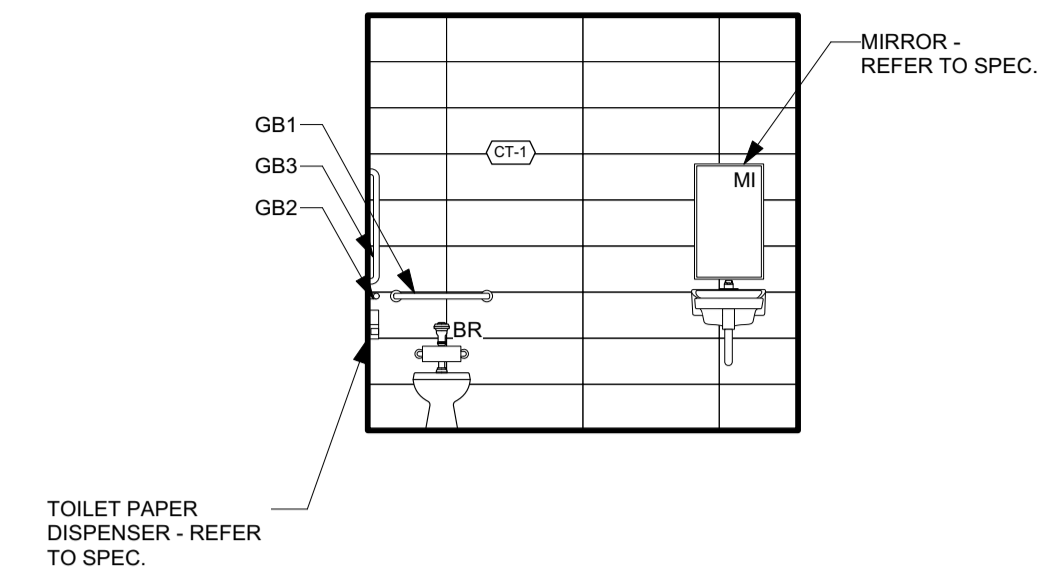
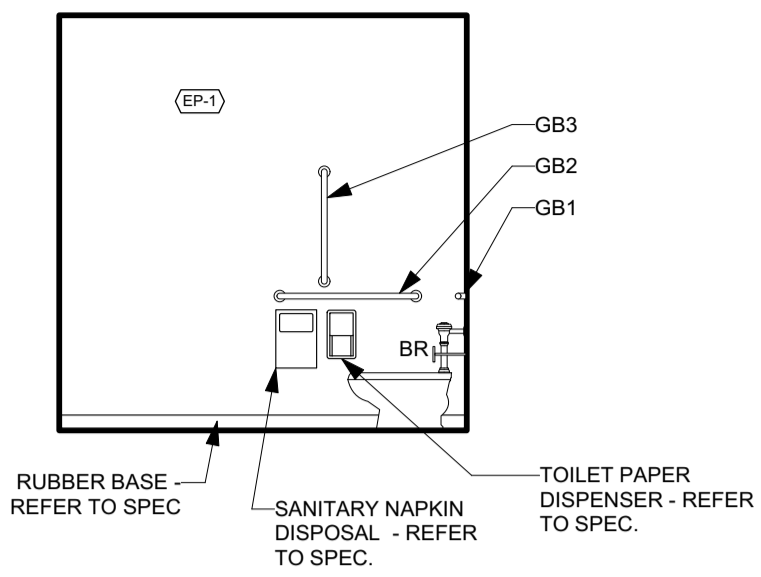


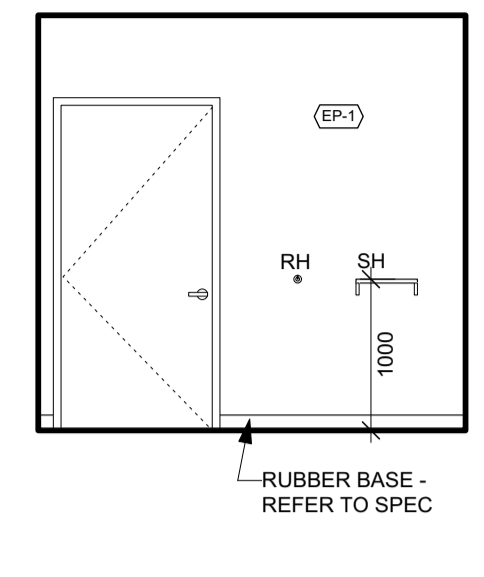
TYPICAL MOUNTING HEIGHTS
 NOTE: ALL ACCESSIBLE TOILET GRAB BARS TO FOLLOW ABOVE CONFIGURATION
 NOTE: PROVIDE BLOCKING IN WALL FOR ALL WALL MOUNTED ITEMS
 ROBE HOOKS IN NON-ACCESSIBLE WASHROOMS TO BE MOUNTED 1500 AFF



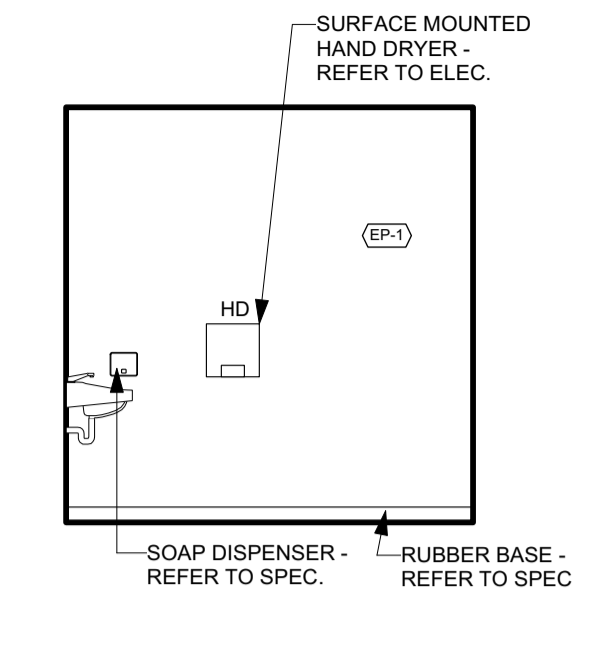
1 INTERIOR ELEVATION - UTR
 Scale: 1:50



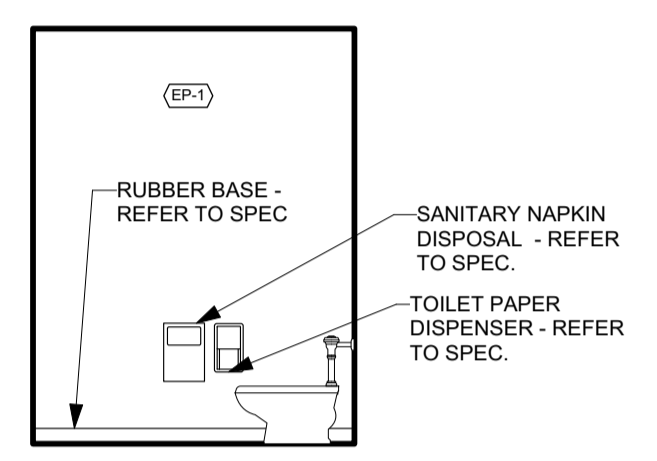
2 INTERIOR ELEVATION - UTR
 Scale: 1:50



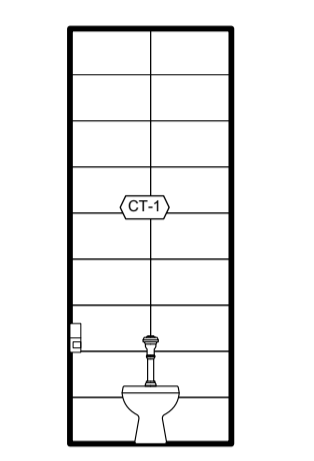
3 INTERIOR ELEVATION - UTR
 Scale: 1:50



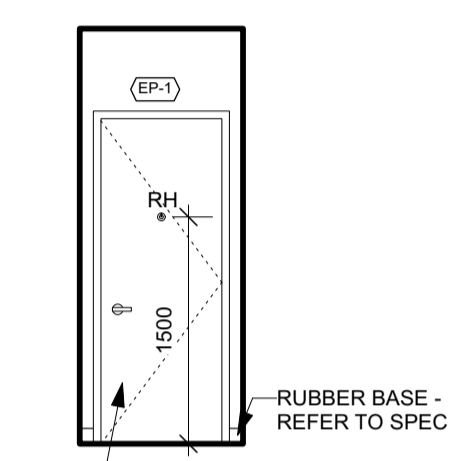
4 INTERIOR ELEVATION - UTR
 Scale: 1:50



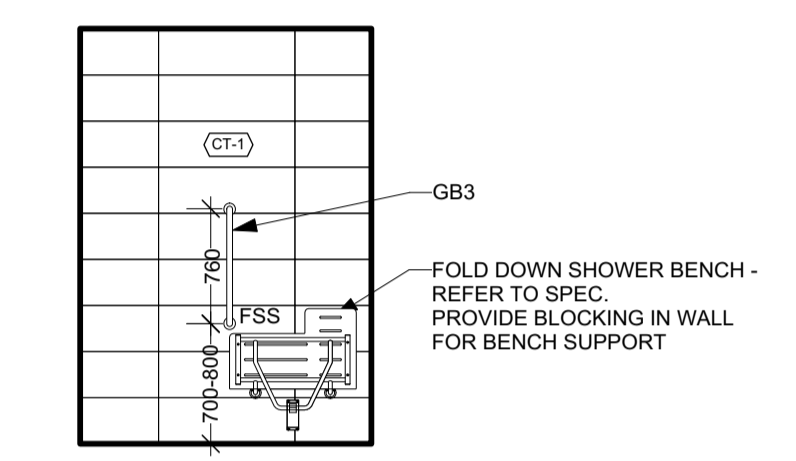
5 INT ELEV - W/C
 Scale: 1:50



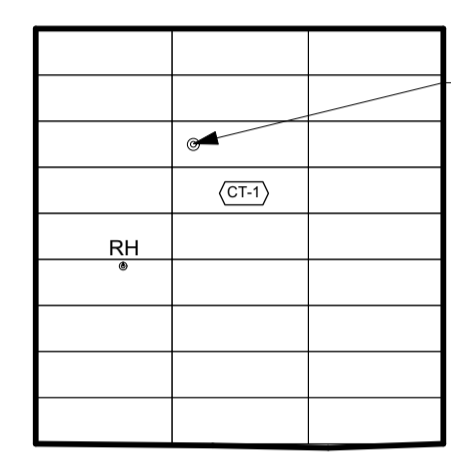
6 INT ELEV - W/C
 Scale: 1:50



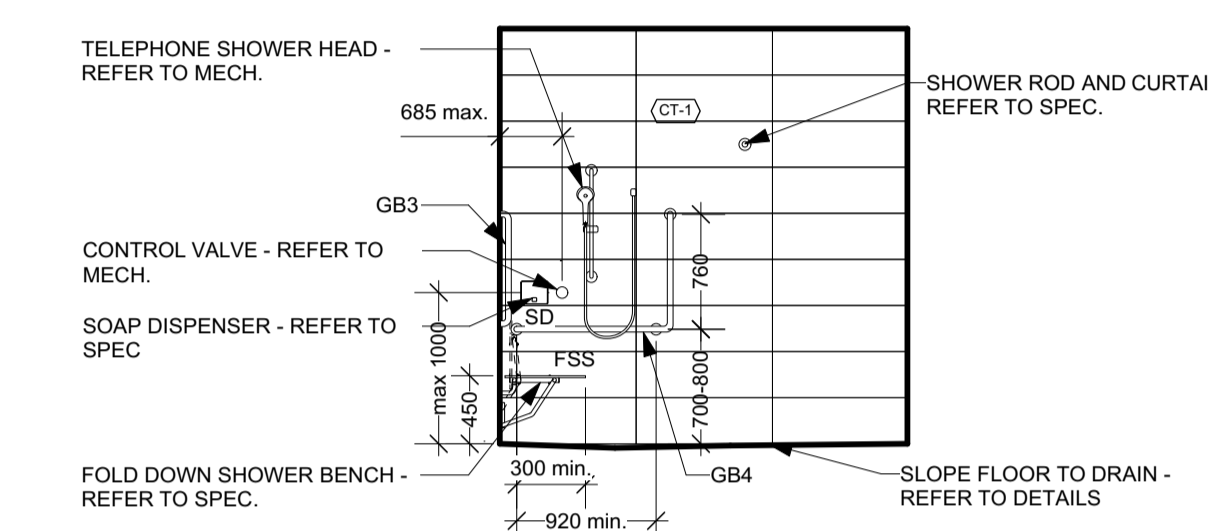
7 INT ELEV - W/C
 Scale: 1:50



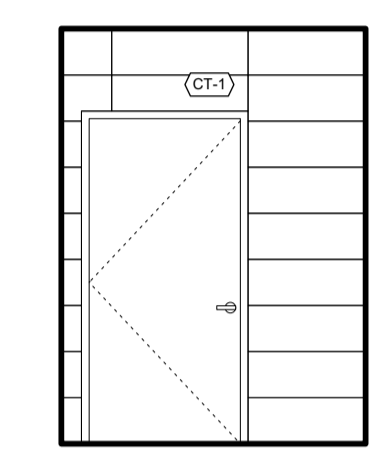
8 INT ELEV - SHOWER
 Scale: 1:50



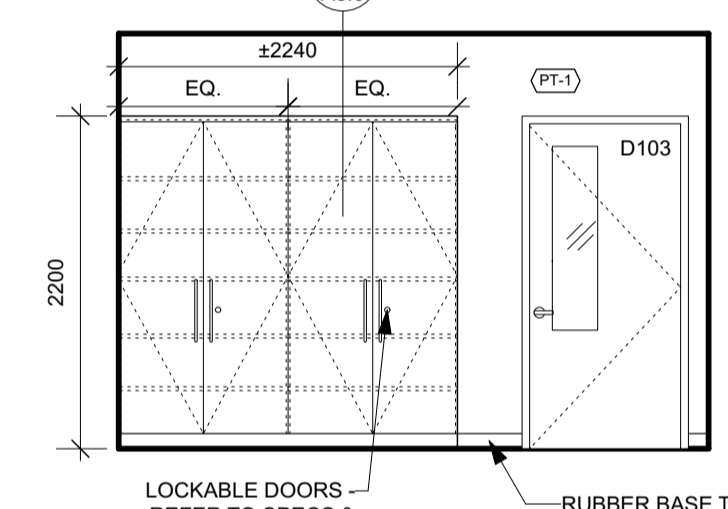
9 INTERIOR ELEVATION - SHOWER
 Scale: 1:50



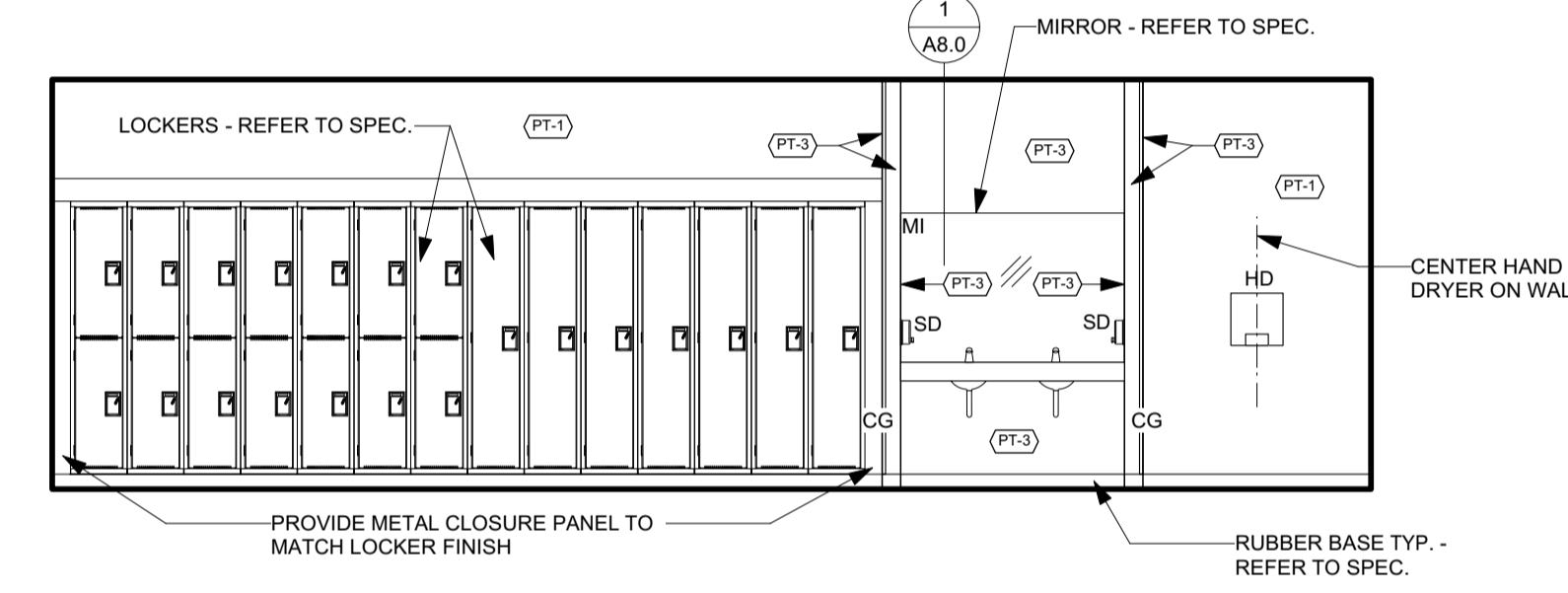
10 INTERIOR ELEVATION - SHOWER
 Scale: 1:50



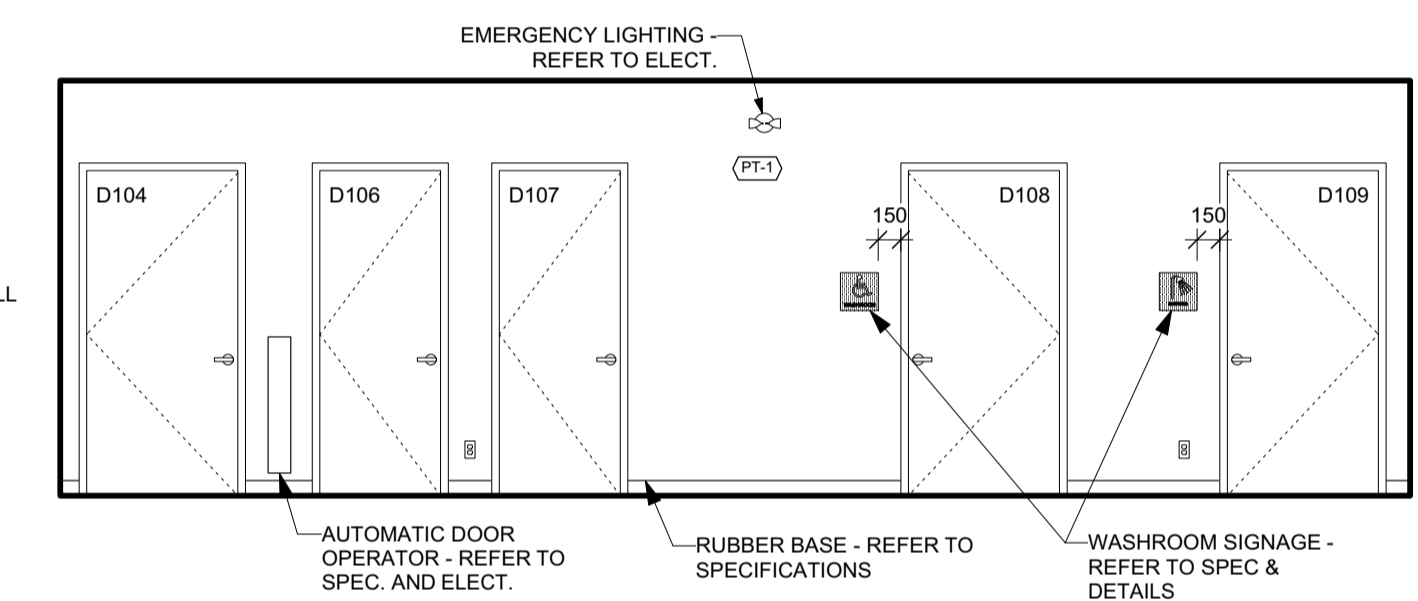
11 INTERIOR ELEVATION - SHOWER
 Scale: 1:50



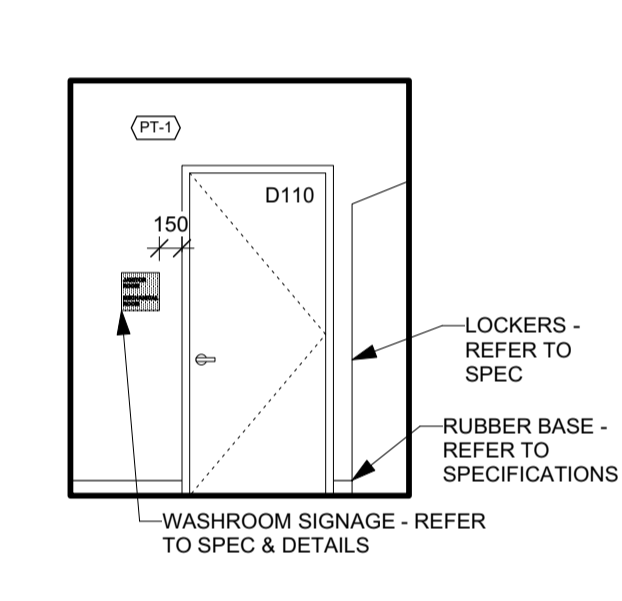
12 INTERIOR ELEVATION - OFFICE
 Scale: 1:50



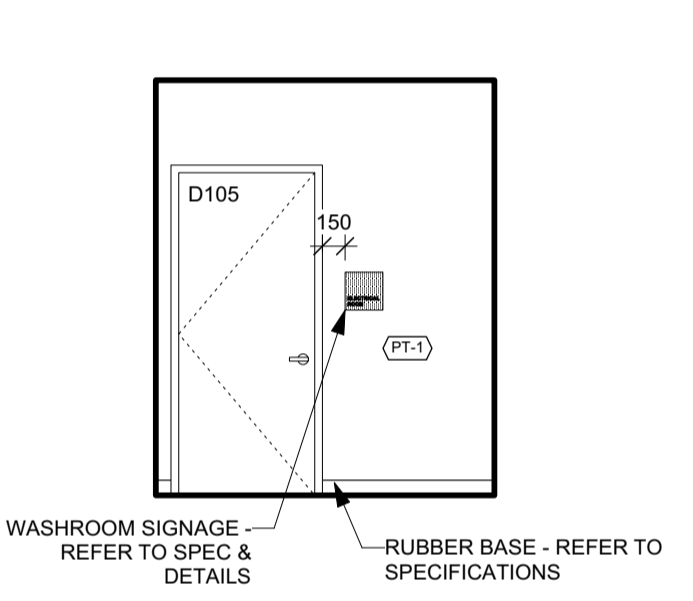
13 INTERIOR ELEVATION - LOCKER ROOM
 Scale: 1:50



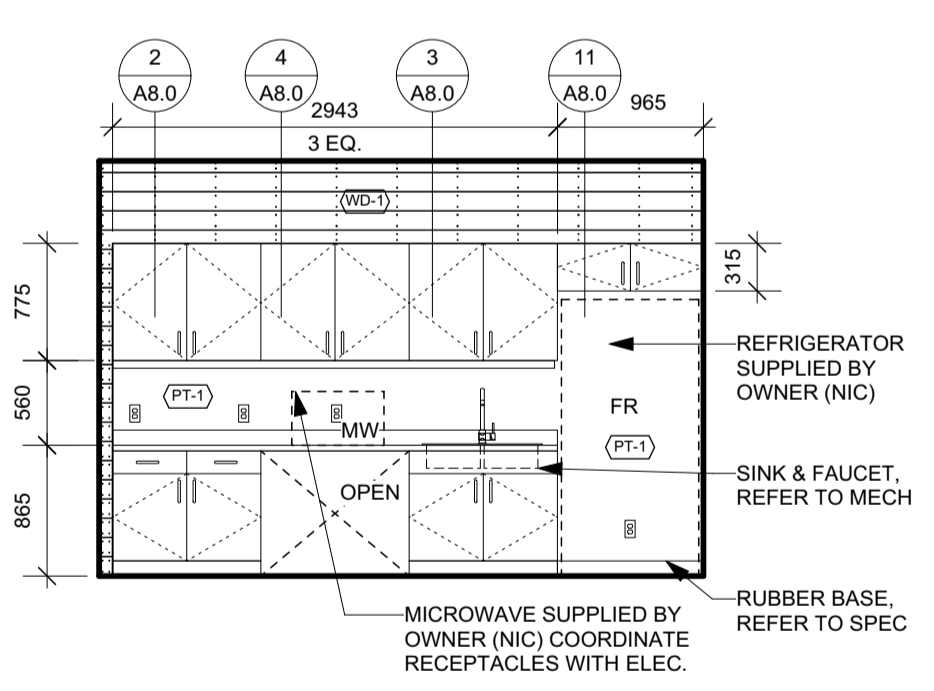
14 INTERIOR ELEVATION - LOCKER ROOM
 Scale: 1:50



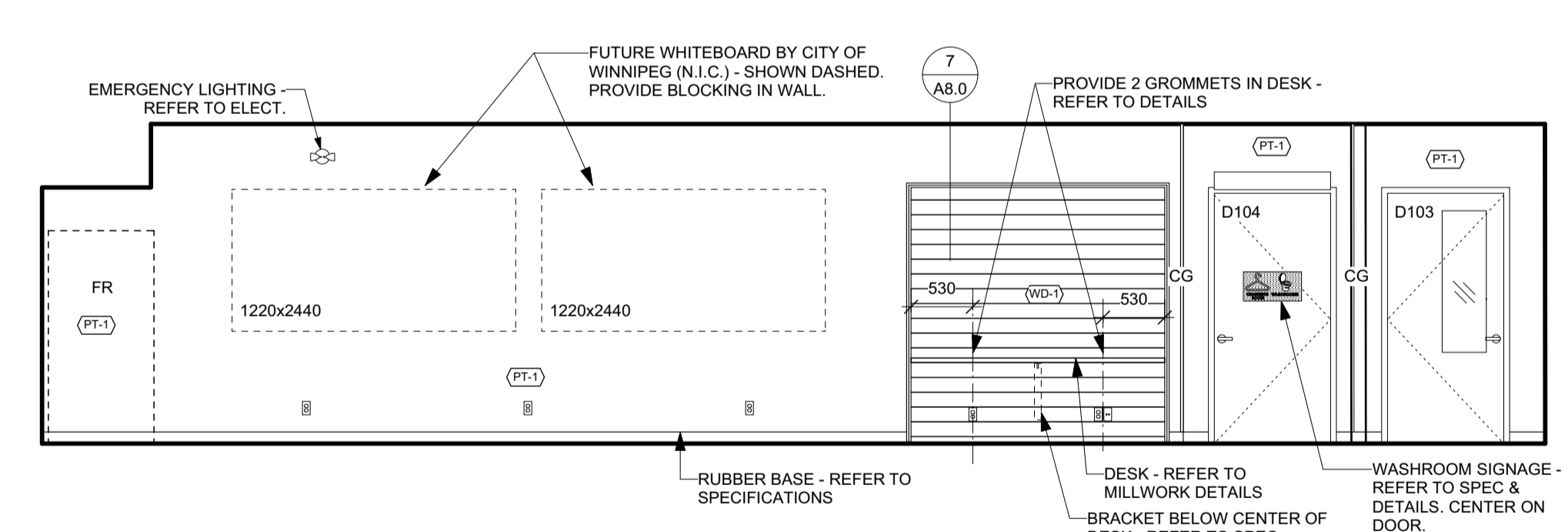
15 INT ELEV - LOCKER RM
 Scale: 1:50



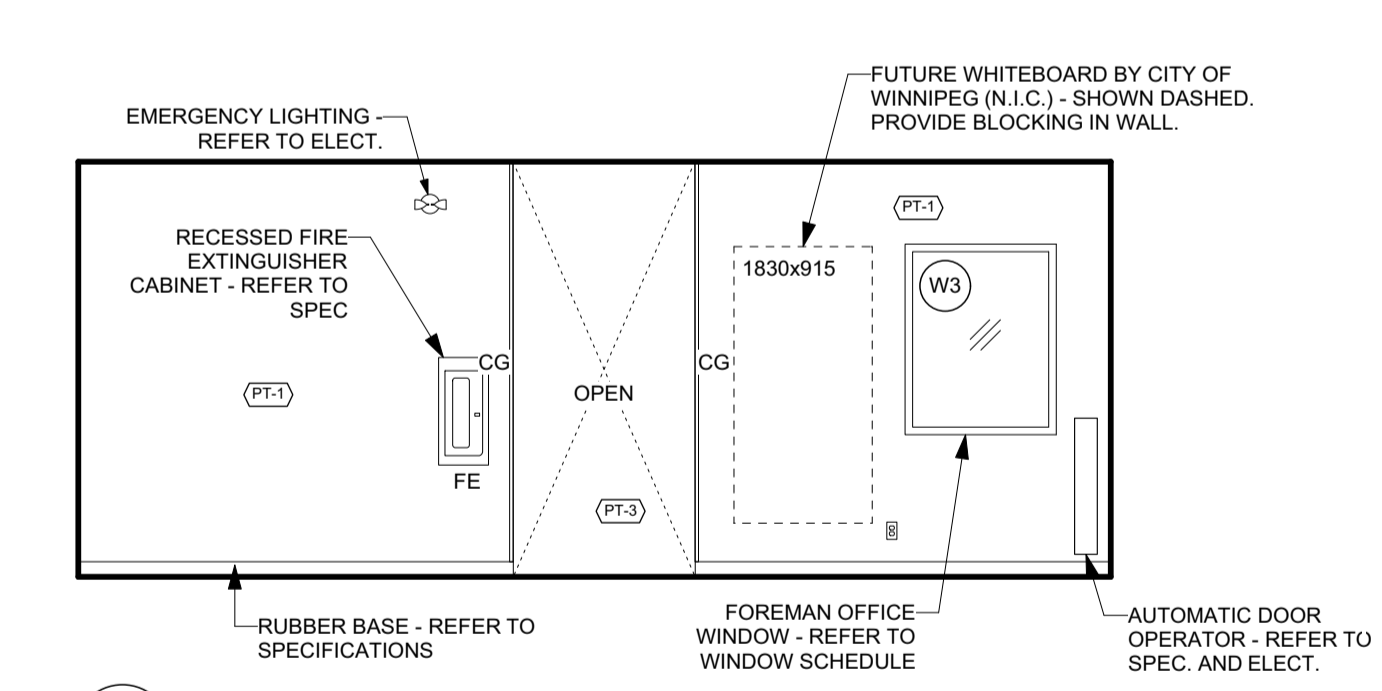
16 INT ELEV - LOCKER RM
 Scale: 1:50



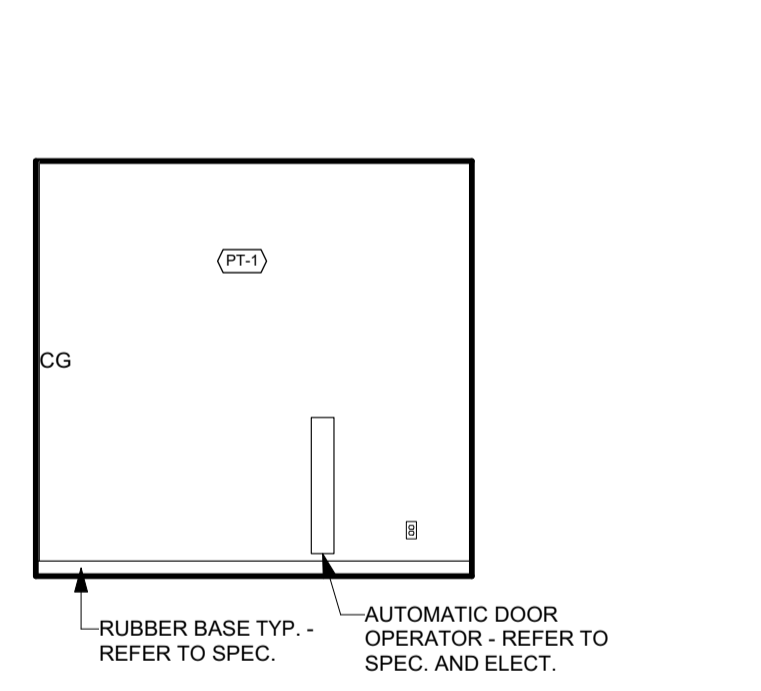
17 INTERIOR ELEVATION - STAFF ROOM
 Scale: 1:50



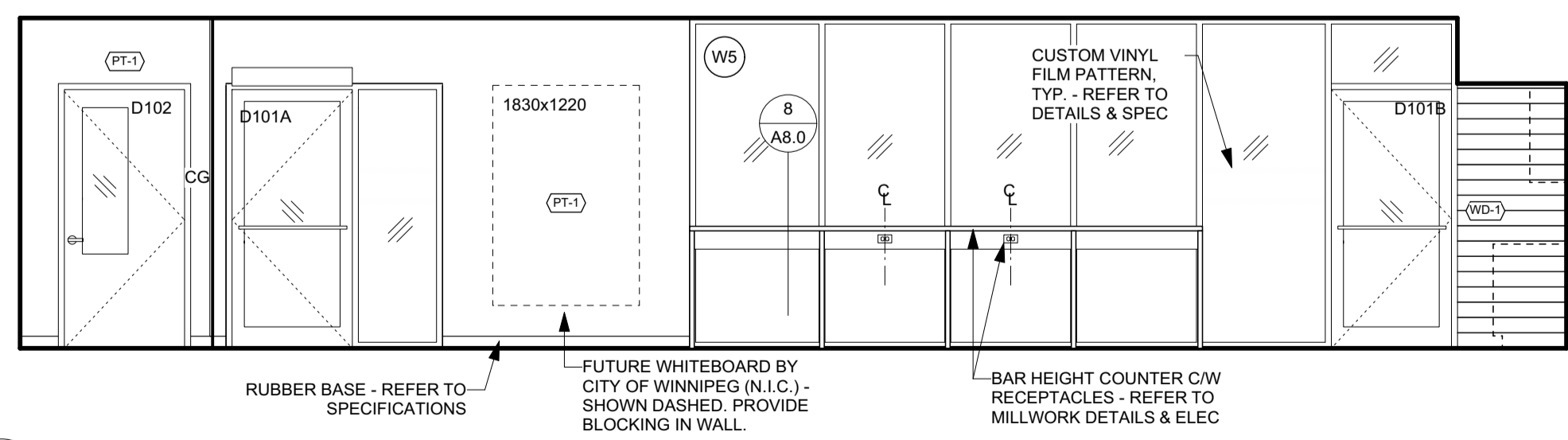
18 INTERIOR ELEVATION - STAFF ROOM
 Scale: 1:50



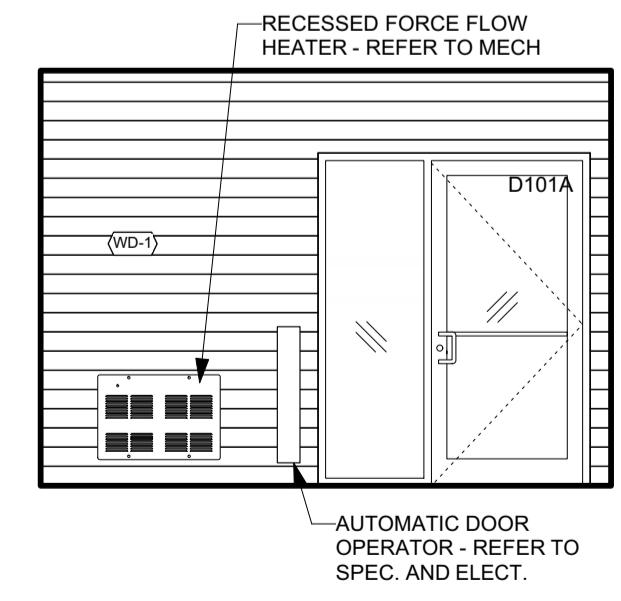
19 INTERIOR ELEVATION - STAFF ROOM
 Scale: 1:50



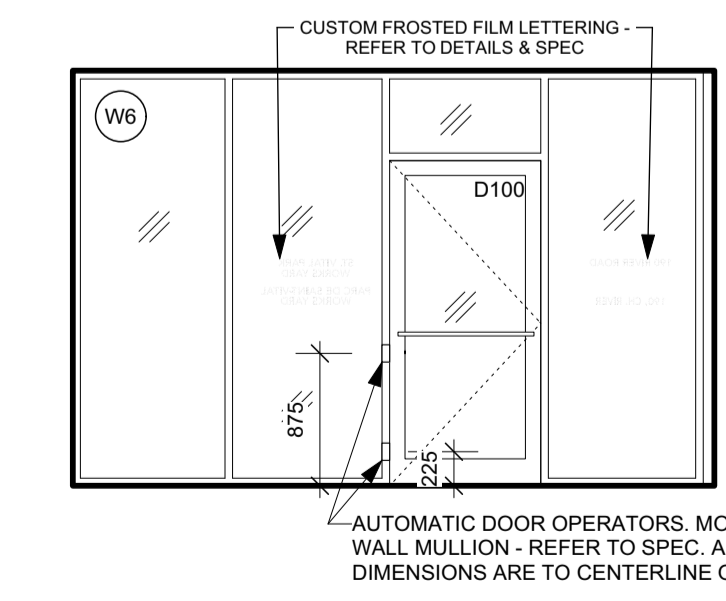
20 INTERIOR ELEVATION - STAFF ROOM
 Scale: 1:50



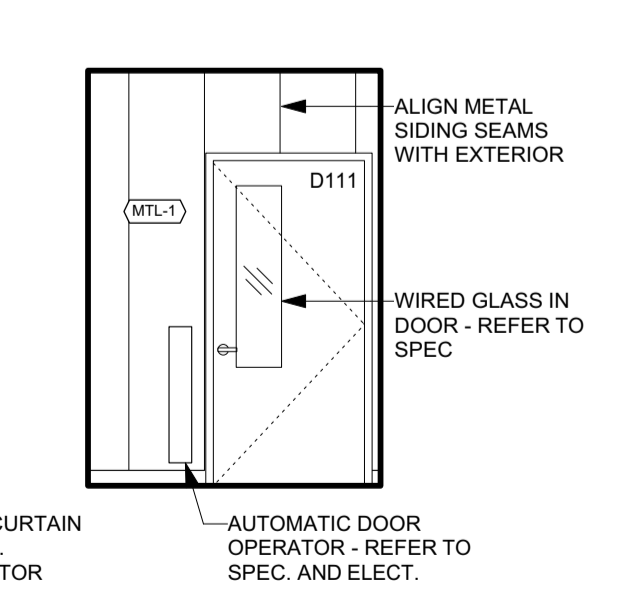
21 INTERIOR ELEVATION - STAFF ROOM
 Scale: 1:50



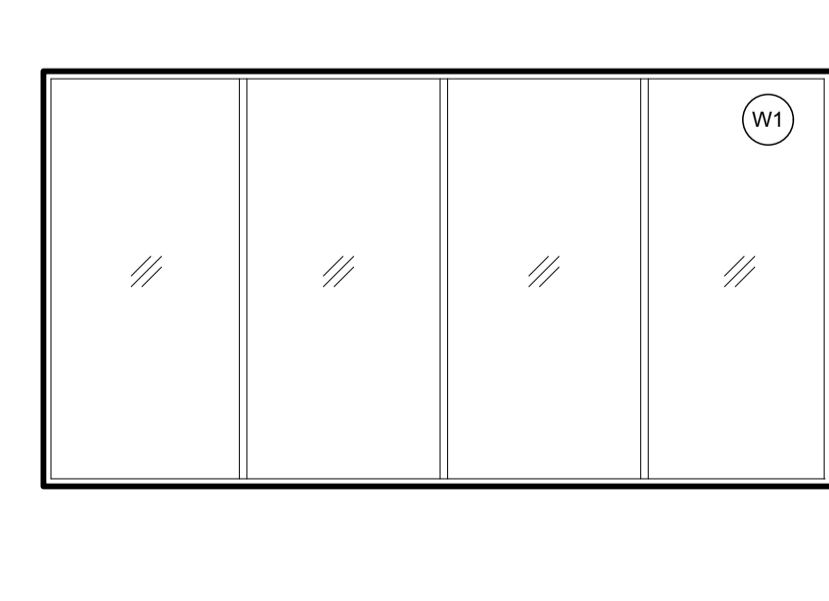
22 INT ELEV - VESTIBULE
 Scale: 1:50



23 INT ELEV - VESTIBULE
 Scale: 1:50



24 INT ELEV - VESTIBULE
 Scale: 1:50



25 INT ELEV - VESTIBULE
 Scale: 1:50

LEGEND

ADO	AUTOMATIC DOOR OPERATOR
BR	BACK REST
CG	CORNER GUARDS - REFER TO SPEC SECTION 09 21 16
FE	FIRE EXTINGUISHER
FD	FLOOR DRAIN - REFER TO MECH
FSS	FOLDING SHOWER SEAT
GB1	GRAB BAR - 600 LONG
GB2	GRAB BAR - 900 LONG
GB3	GRAB BAR - 700 LONG
GB4	GRAB BAR - 700 HIGH X 920 LONG
HD	HAND DRYER
MI	MIRROR
MW	MICROWAVE (N.I.C.)
RH	ROBE HOOK
SD	SOAP DISPENSER
SH	SHELF
SND	SANITARY NAPKIN DISPENSER
TP	TOILET PAPER HOLDER

FINISH CODE SCHEDULE: (TAG)

1.	PT-1: INTERIOR WALLS, EGGHELL FINISH
2.	PT-2: INTERIOR CEILINGS, FLAT FINISH
3.	PT-3: INTERIOR WALLS ACCENT COLOUR, EGGHELL FINISH
4.	PT-4: DOORS & FRAMES, SEMI-GLOSS FINISH
5.	EP-1: EPOXY WALL FINISH - STAFF HOUSE
6.	EP-2: EPOXY CEILING FINISH - STAFF HOUSE
7.	EP-3: EPOXY CEILING FINISH - GARAGE
8.	EP-4: EPOXY WALL FINISH - GARAGE
9.	WD-1: HORIZONTAL WOOD SIDING - STAIN
10.	CT-1: CERAMIC WALL TILE
11.	CT-2: CERAMIC FLOOR TILE (SHOWER)
12.	CT-3: CERAMIC FLOOR TILE
13.	MTL-1: STANDING SEAM METAL SIDING

NOTE: CONTRACTOR TO COORDINATE LOCATION OF ELECTRONIC FLUSH VALVE WITH GRAB BARS - TYP.

3	-	-
2	-	-
1	-	-
0	21.10.29	ISSUED FOR CONSTRUCTION
NO.	DATE	REVISION / ISSUANCE

architecture inc.
 120 Fort Street, Suite 103 Winnipeg, Manitoba R3C 1C7 204 318 2010

ST. VITAL PARK GARAGE & STAFF HOUSE
 190 RIVER ROAD

INTERIOR ELEVATIONS

Project No. 20105
 Date 21.10.29
A7.0