

2 LIGHTING LAYOUT
E2.0 SCALE: 1/100

SPECIFIC ELECTRICAL NOTES

- 1 WIRE AND CONNECT OVERHEAD DOOR OPERATOR AND ALL RELATED CONTROLS. CONFIRM EXACT REQUIREMENTS WITH MANUFACTURER PRIOR TO ROUGH-IN.
- 2 WIRE AND CONNECT POWER DOOR OPERATOR AND ALL RELATED CONTROLS. CONFIRM EXACT REQUIREMENTS WITH MANUFACTURER PRIOR TO ROUGH-IN.
- 3 WIRE AND CONNECT AUTOMATIC FAUCET LOW VOLTAGE TRANSFORMER AND ALL RELATED CONTROLS. REFER TO MECHANICAL.
- 4 WIRE AND CONNECT AUTOMATIC FLUSH LOW VOLTAGE TRANSFORMER AND ALL RELATED CONTROLS. REFER TO MECHANICAL.
- 5 WIRE AND CONNECT MECHANICAL GAS DETECTION UNIT. COORDINATE EXACT REQUIREMENTS AND LOCATION WITH MECHANICAL PRIOR TO ROUGH-IN.
- 6 WIRE AND CONNECT OWNER SUPPLIED AIR COMPRESSOR. COMPRESSOR AND ALL RELATED CONTROLS. COORDINATE EXACT REQUIREMENTS AND LOCATION WITH OWNER PRIOR TO ROUGH-IN. SIZE CIRCUIT BREAKER AND WIRE ACCORDING TO FINAL NAME PLATE RATING ON EQUIPMENT.
- 7 WIRE AND CONNECT OWNER SUPPLIED PRESSURE WASHER. COORDINATE EXACT REQUIREMENTS AND LOCATION PRIOR TO ROUGH-IN. SIZE CIRCUIT BREAKER AND WIRE ACCORDING TO FINAL NAME PLATE RATING ON EQUIPMENT.
- 8 2 HOUR OVERRIDE SWITCH FOR LIGHTING TIME CLOCKS.
- 9 COORDINATE SUSPENSION OF LIGHTS WITH MECHANICAL DUCTING PRIOR TO ROUGH-IN.
- 10 RECEPTACLE MOUNTED HORIZONTALLY IN MILLWORK. RECEPTACLE COVER PLATES TO BE BLACK. REFER TO ARCHITECTURAL DETAIL B/AB.0 FOR INSTALLATION LOCATION. FEED POWER FROM NEAREST WALL.
- 11 RUN 1/2" EMT FROM LEFT HAND SIDE OF TOP OF DOOR FRAME (FOR REQUEST TO EXIT DEVICE) BACK TO ELECTRICAL 105. PRE-DRILL AND TAP FRAME FOR REQUEST TO EXIT MOUNT.
- 12 RUN 3/4" EMT DOWN THE INSIDE ON LOCK SIDE OF DOOR FRAME (FOR ELECTRIC STRIKE & DOOR CONTACT & CARD ACCESS CONTACTS) AND BACK TO ELECTRICAL 105.
- 13 CARD ACCESS READER MOUNTED ON OUTSIDE WALL AT 900mm A.F.F.. RUN 1/2" EMT FROM READER TO ELECTRICAL 105.
- 14 RUN 3/4" EMT DOWN THE INSIDE OF DOOR FRAME (FOR DOOR CONTACT) AND BACK TO MECHANICAL ROOM 108.
- 15 REFER TO 3/E3.0 FOR ELECTRICAL IN MECH 110.

GENERAL ELECTRICAL NOTES

1. CONFIRM LOCATION AND REQUIREMENTS OF ACCESS CONTROL SYSTEM DEVICES PRIOR TO ROUGH IN.
2. CO-ORDINATE LOCATION OF ALL HARDWIRED PLUMBING FIXTURE WITH LOCATION OF GRAB BARS AND OTHER WASHROOM ACCESSORIES.
3. PROVIDE ONE(1) MERCURY LP1502 CONTROLLER TO CONTROL ONE(1) DOOR. CABINET/ENCLOSURE TO BE ALTRONIX TROVE 2M2.
4. PROVIDE ALTRONIX EFLOW 6NB & ACM8CB POWER SUPPLY TO POWER CONTROLLERS, CARD ACCESS READERS, ELECTRIC STRIKES (24V) AND DOOR CONTACTS.
5. INSTALL CONTROLLERS IN JOI LOCKABLE ENCLOSURE AND INTERLOCK WITH POWER SUPPLY WITH EMT SLEEVES. CONTROLLERS AND POWER SUPPLY TO BE LOCATED IN ELECTRICAL 105 WHERE SPACE PROVIDES.
6. DOOR DEVICES AND SENSORS ARE TO BE CONNECTED WITH HONEYWELL MULTI-CONDUCTOR PROFUSION 3195 CABLE HOME-RUNS (NO SPLICES).
7. CONFIRM LOCATION AND REQUIREMENTS OF SECURITY SYSTEM DEVICES PRIOR TO ROUGH IN WITH CONTRACT ADMINISTRATOR.
8. ALL SECURITY SYSTEM WIRING IN OPEN CEILING TO BE IN CONDUIT. ALL WIRING IN DROP CEILING CAN BE RUN USING J-HOOKS.

WET AND HAZARDOUS LOCATION ELECTRICAL NOTES

- 1 ALL WIRING IN SERVICE AREAS INDICATED TO COMPLY WITH C.E.C. 20-102. AREA FROM FINISHED FLOOR TO 50mm ABOVE FINISHED FLOOR TO BE HAZARDOUS AREA CLASS 1 ZONE 2. AREA BELOW FLOOR TO BE HAZARDOUS AREA CLASS 1 ZONE 2. ALL EQUIPMENT ABOVE THIS AREA SHALL BE IN COMPLIANCE WITH CANADIAN ELECTRICAL CODE 20-110.
- 2 ALL WIRING AND ELECTRICAL EQUIPMENT IN WET LOCATION TO BE IN COMPLIANCE WITH C.E.C. 22-002 CATEGORY 1.

MOTOR SCHEDULE

| NO. | DESCRIPTION | LOCATION | VOLTAGE | HP/W/MCA | C.B. | COND. | STARTER | NOTES |
|---------|---------------------|--------------------|----------|----------|---------|-------|----------|-------|
| HWT-1,2 | HOT WATER TANK | MECH 110 | 240V-1PH | 9 KW | 50A-2P | #8 | - | 1 |
| RCP-1 | RECIRC PUMP | MECH 110 | 120V-1PH | FRAC. | 15A-1P | #12 | - | 1 |
| HRV-1 | HEAT RECOVERY VENT. | MECH 110 | 120V-1PH | 5.5 MCA | 15A-1P | #12 | PACKAGED | 1 |
| AH-1 | AIR HANDLER UNIT | MECH 110 | 240V-1PH | 49.3 MCA | 80A-2P | #4 | PACKAGED | 1 |
| PHC-1 | PREHEAT COIL | MECH 110 | 240V-1PH | 6 KW | 35A-2P | #8 | - | 1 |
| RHC-1 | REHEAT COIL | STAFF RM 101 | 240V-1PH | 23 KW | 125A-2P | #1 | - | 1 |
| EF-1 | EXHAUST FAN | EQUIPMENT SHOP 114 | 120V-1PH | 1/2 HP | 20A-1P | #12 | MAGNETIC | 1,2 |

SPECIFIC NOTES
 1. WIRE AND CONNECT AS REQUIRED. REFER TO MECHANICAL.
 2. MAGNETIC STARTER BY ELECTRICAL CONTRACTOR.
 3. MANUAL STARTER BY ELECTRICAL CONTRACTOR.
 4. COORDINATE INSTALLATION OF PATHWAYS TO PIT FOR SUMP PUMP WIRING.
 5. WIRE AND CONNECT INDOOR UNIT TO OUTDOOR UNIT TERMINALS, AS PER MANUFACTURER'S RECOMMENDATIONS. REFER TO MECHANICAL.

GENERAL NOTES
 A. MANUAL STARTERS TO BE C/W OVERCURRENT PROTECTION.
 B. ALL DISCONNECT SWITCHES TO BE SUPPLIED BY ELECTRICAL CONTRACTOR.
 C. ELECTRICAL CONTRACTOR TO PROVIDE CIRCUIT BREAKERS AND WIRING ACCORDING TO THE FINAL NAMEPLATES OF ALL THE MECHANICAL EQUIPMENT.
 D. ALL LOW VOLTAGE CONTROL WIRING BY MECHANICAL CONTRACTOR.
 E. ALL LINE VOLTAGE CONTROL WIRING BY ELECTRICAL CONTRACTOR - REFER TO MECHANICAL SECTION. CO-ORDINATE EXACT REQUIREMENTS WITH MECHANICAL CONTRACTOR.

HEATING SCHEDULE

| TYPE | WATTS | VOLTAGE | DESCRIPTION | MANUFACTURER | CATALOGUE NO. | NOTES |
|------|-------|---------|-------------|--------------|---------------|-------|
| C | 1000 | 120 | BASEBOARD | OUELLET | ODIA1002 | 1 |
| FF-6 | 6000 | 240 | FORCE FLOW | OUELLET | OAC06000 | 2 |
| UH-1 | 25000 | 240 | UNIT HEATER | OUELLET | OAS25000AM | 3 |
| UH-2 | 10000 | 240 | UNIT HEATER | OUELLET | OWD10000 | 3,4 |

SPECIFIC HEATING NOTES:
 1. C/W BUILT-IN THERMOSTAT OR WIRED TO REMOTE THERMOSTAT AS SHOWN ON DRAWINGS.
 2. C/W BUILT-IN THERMOSTAT UNLESS OTHERWISE INDICATED. HEATER TO BE RECESSED. COORDINATE WALL CONSTRUCTION WITH G.C. TO ENSURE ADEQUATE SPACE IS PROVIDED. ORDER HEATER IN SEM-GLOSS BLACK FINISH.
 3. C/W BUILT-IN THERMOSTAT. MOUNT SECURELY WHERE INDICATED TO THE SATISFACTION OF THE ENGINEER.
 4. WET LOCATION RATED.

GENERAL HEATING NOTES:
 A. VOLTAGE TO BE AS INDICATED ABOVE UNLESS OTHERWISE NOTED ON DRAWINGS.
 B. HEATER SHALL BE FED FROM GFCI PROTECTED CIRCUIT IF INSTALLED WITHIN 1m OF A SINK, TUB, SHOWER (CEC 62-132). CONTROLS FOR HEATERS SHALL BE NO CLOSER THAN 500mm FROM SINK, TUB, SHOWER (CEC 62-130).

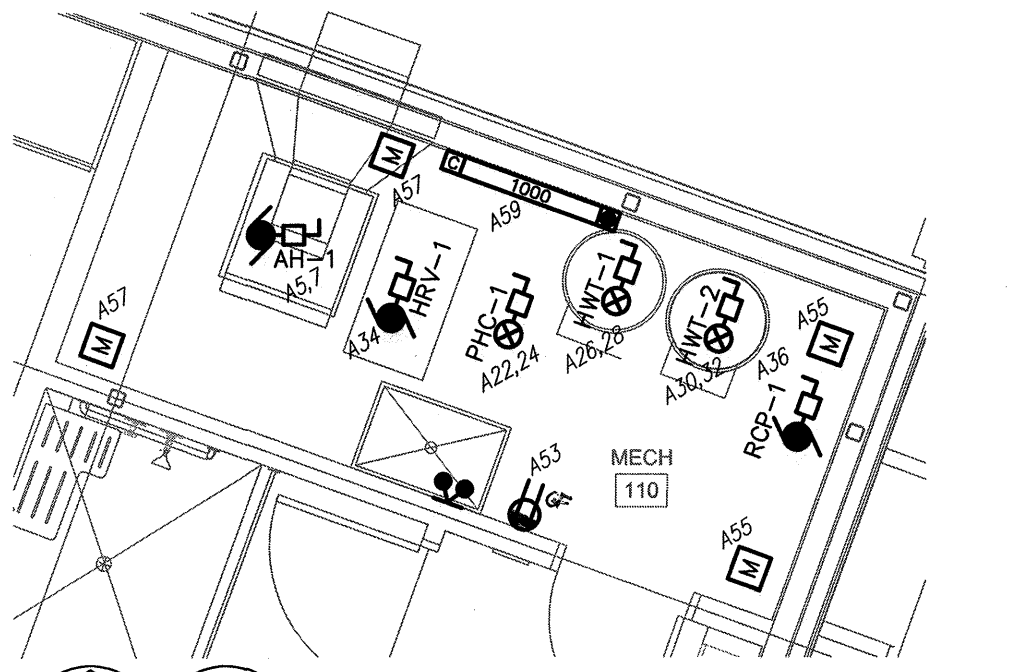
EXTERIOR LUMINAIRE SCHEDULE

| TYPE | DESCRIPTION | MOUNTING | CATALOG NUMBER | LAMPS |
|------|----------------------------|----------------------------|-----------------------------------------------------------------------|------------|
| 1 | LED WALL PACK | WALL MOUNTED @ 7.5' A.F.G. | LITHONIA LIGHTING - WDG01 LED P1 40K 80CRI VF MVOLT SRM DBLXD | 4W LED |
| 2 | LED POLE MOUNTED LUMINAIRE | 20' POLE MOUNTED | LITHONIA LIGHTING - RSX1 LED P4 40K R3 C/W PRAIRIE POLE RTA 20C8B4-01 | 133.2W LED |

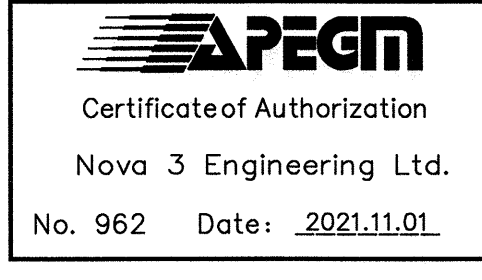
LUMINAIRE SCHEDULE

| LETTER | DESCRIPTION | RECESS/INSTALL | LITHONIA LIGHTING | WATTS |
|--------|------------------------------------|---------------------------------------------|-------------------------------------------------------------------------------------------------------------|-----------|
| A | 6" LED DOWNLIGHT | RECESSED IN DRYWALL | LITHONIA LIGHTING - 6BPMW LED 30K 90CRI | 10.3W LED |
| B | 1'x4' LED LINEAR | RECESSED IN T-BAR | LITHONIA LIGHTING - BLT4 30L ADSM GZ10 LPB35 | 23.2W LED |
| C | 4" LED DOWNLIGHT | RECESS IN DRYWALL | LITHONIA LIGHTING - 4BPMW LED | 11.2W LED |
| D | 4" LED STRIP (WET LOCATION RATED) | SURFACE MOUNTED | LITHONIA LIGHTING - FEM L48 8000LM LPAFL WD 80CRI 40K | 50.5W LED |
| E | 4" LED STRIP | SURFACE MOUNTED TO UNDERSIDE OF HOLLOW CORE | LITHONIA LIGHTING - ZLIN L48 7000LM FST MVOLT 40K 80CRI | 52.1W LED |
| F | 4" LED DOWNLIGHT | RECESSED IN SOFFIT | JUNO LIGHTING - W4 REG SWW5 90CRI 35K | 9W LED |
| G | 6"x4' LED LINEAR | RECESSED IN WOOD SLAT CEILING | LUMENWERX - VIAWET-TMG+HLO-LED-80-500-35-4FT | 22.5W LED |
| H | 4" LED STRIP | SUSPENDED @ 8' A.F.F. | LITHONIA LIGHTING - CSS L48 AL03 MVOLT SWW3 80CRI (3000LM 40K) | 24.3W LED |
| I | LED TAPE LIGHT IN ALUMINUM CHANNEL | SURFACE MOUNTED TO UNDERSIDE OF CABINET | DIFFUSION LIGHTING - SL1 9"6" 24V 4100K C/W ALL ASSOCIATED CONNECTORS, CABLES, DRIVERS AND ALUMINUM PROFILE | 24W LED |
| J | 4" LED DOWNLIGHT | RECESSED IN DRYWALL/T-BAR | LITHONIA LIGHTING - LDN4 35/15 L04AR LD | 17.5W LED |

LUMINAIRE SCHEDULE NOTES:
 1. UNLESS OTHERWISE NOTED, ALL LEDS TO BE 3500K & 80 CRI.
 2. PROVIDE PHOTOCELL CONTROL FOR ALL OUTDOOR LUMINAIRES.
 3. CONTACT ANDY KENNETT AT RD SALES FOR FURTHER CATALOG INFORMATION/FIXTURE DETAILS.



3 ENLARGED MECH 110 LAYOUT
E2.0 SCALE: 1/50



3
2
1
0 2021.11.01 - Issued for Construction
NO. DATE REVISION / ISSUANCE
Seal



Architect
Engineer

NOVA 3 ENGINEERING LTD.
 PROFESSIONAL ENGINEERS
 201-120 FORT STREET TEL: (204) 943-6142
 WINNIPEG, MANITOBA R3C 1C7 FAX: (204) 942-1276
 WWW.NOVA3.CA INC: 41-070
 THIS DRAWING IS THE EXCLUSIVE PROPERTY OF NOVA 3 ENGINEERING LTD. AND MAY ONLY BE REPRODUCED WITH THE WRITTEN PERMISSION OF NOVA 3 ENGINEERING LTD.
 THE CONCEPT AND DESIGN INCORPORATED INTO THIS DRAWING ARE BASED ON INFORMATION PROVIDED BY THE CLIENT AND OTHER RELATED SOURCES. PROFESSIONAL ENGINEER ACCEPTS NO RESPONSIBILITY FOR DRAWING AND DESIGN UNLESS DRAWING IS ACCOMPANIED BY ORIGINAL SEALED LETTERS OF INTENT OR EQUIVALENT ACCEPTABLE FACSIMILE. PROFESSIONAL ENGINEER ACCEPTS NO RESPONSIBILITY FOR FINAL INSTALLATION CONFORMANCE WITHOUT ORIGINAL SEALED CERTIFICATE OF INSPECTION OR EQUIVALENT ACCEPTABLE FACSIMILE.

Project
ST. VITAL PARK MAINTENANCE FACILITY
190 RIVER ROAD
Sheet Title
ELECTRICAL - LIGHTING POWER AND SYSTEM LAYOUT
Project No. 20105
Date 2021.11.01
Sheet
E2.0