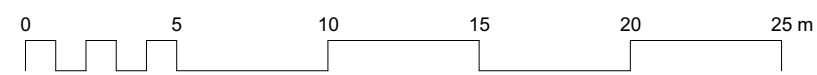
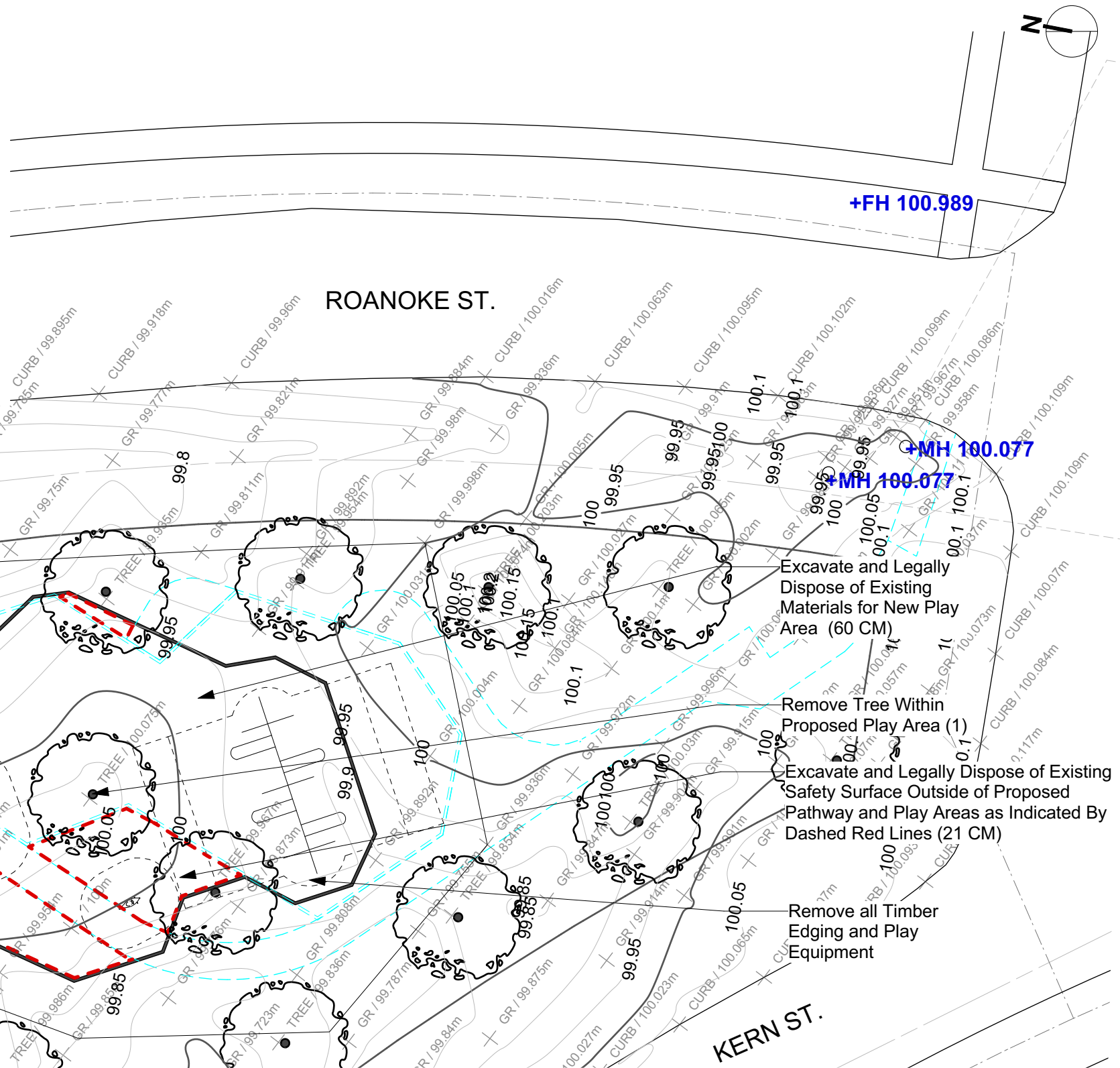
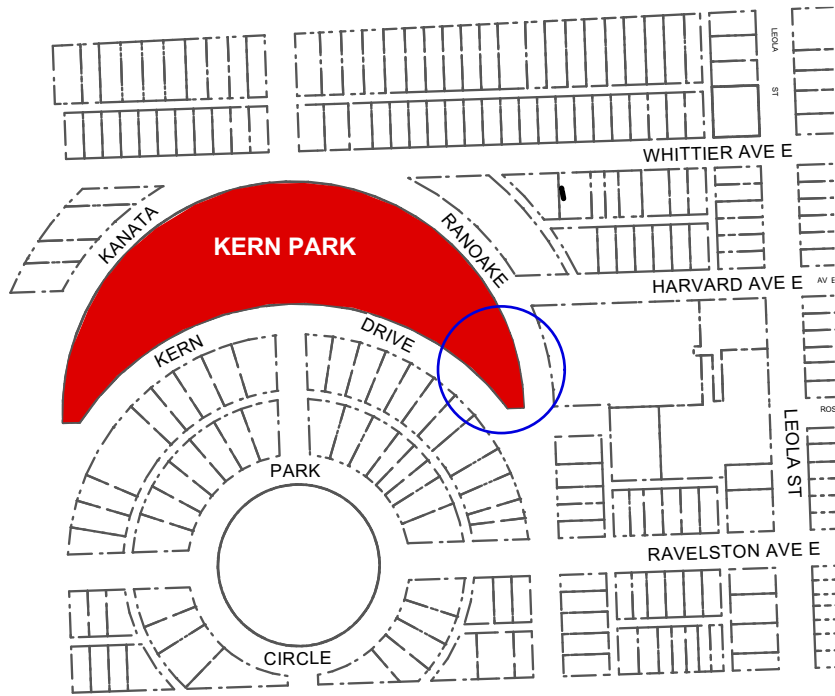


- DEMOLITION & REMOVALS NOTES**
1. ALL WORK TO CONFORM TO CURRENT CITY OF WINNIPEG STANDARD CONSTRUCTION SPECIFICATIONS AND DETAILS UNLESS OTHERWISE NOTED.
 2. DIMENSIONS ARE IN METERS UNLESS OTHERWISE NOTED.
 3. DO NOT SCALE DRAWING.
 4. PROTECT EXISTING TREES. TREES REQUIRING STRAPPING WILL BE IDENTIFIED ON SITE.
 5. SECURE CONSTRUCTION SITE AND STAGING AREA WITH CONSTRUCTION FENCING C/W SAFETY SIGNAGE.
 6. CONFIRM STAGING AREA W/ CA PRIOR TO CONSTRUCTION.
 7. BLUE LINES INDICATE OUTLINE OF PROPOSED PLAY AREA AND PATHWAY



CONTRACTOR TO CONFIRM ALL DIMENSIONS AND REPORT ANY DISCREPANCIES TO CONTRACT ADMINISTRATOR PRIOR TO CONSTRUCTION. LOCATION OF UNDERGROUND STRUCTURES AS SHOWN ARE BASED ON THE BEST INFORMATION AVAILABLE BUT NO GUARANTEE IS GIVEN THAT ALL EXISTING UTILITIES ARE SHOWN OR THAT THE GIVEN LOCATIONS ARE EXACT. CONFIRMATION OF EXISTENCE AND EXACT LOCATION OF ALL SERVICES MUST BE OBTAINED FROM THE INDIVIDUAL UTILITIES BEFORE PROCEEDING WITH CONSTRUCTION.



THE CITY OF WINNIPEG
 Planning, Property and Development Department
 Planning and Land Use Division
 Unit 15 - 30 Fort Street, Winnipeg, MB, (R3C 4X5)

DESIGNED BY	IL	CHECKED BY	
DRAWN BY	IL/IM	APPROVED BY	
HORIZ. SCALE			
VERT. SCALE	1:250		
DATE	OCT 2021		

MANAGER, PARK AND OPEN SPACES	DATE
MANAGER, PLANNING AND LAND USE DIVISION	DATE

DRAWING TITLE	DRAWING NO.
KERN PARK	
Playground Redevelopment	
EXISTING CONDITIONS & REMOVALS	K.21-B
SITE ADDRESS	BID OPPORTUNITY NO.
50 Kern Drive	726-2021