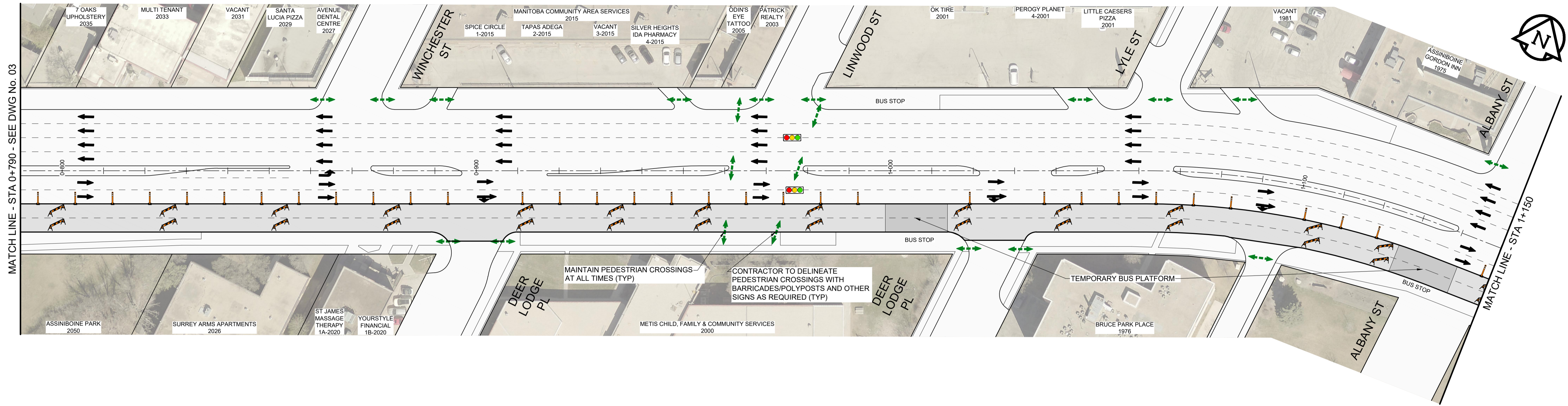
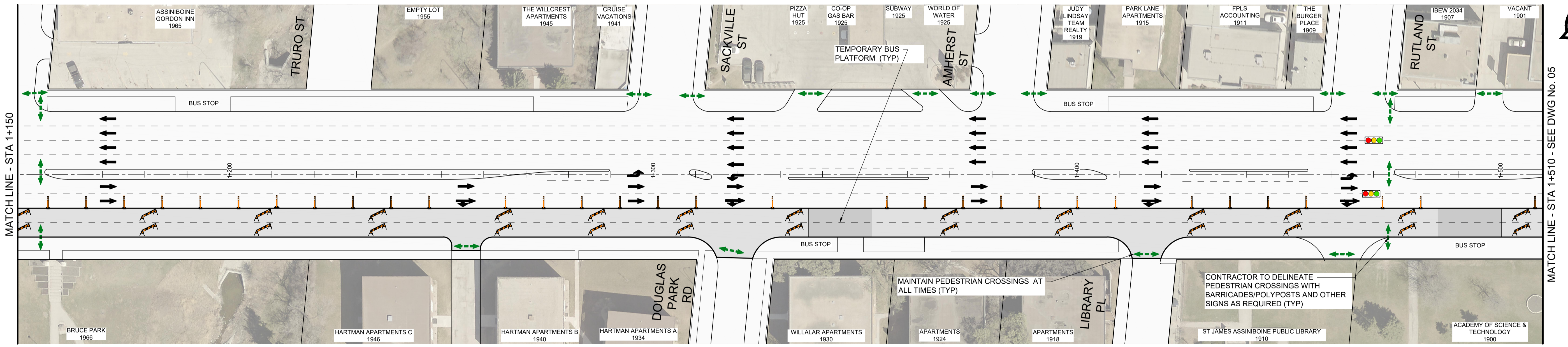


PORTAGE AVENUE



PORTAGE AVENUE



PLAN

SCALE: 1:500



LOCATION APPROVED UNDERGROUND STRUCTURES

SUPR. U/G STRUCTURES DATE COMMITTEE

NOTE: LOCATION OF UNDERGROUND STRUCTURES AS SHOWN ARE BASED ON THE BEST INFORMATION AVAILABLE BUT NO GUARANTEE IS GIVEN THAT ALL EXISTING UTILITIES ARE SHOWN OR THAT THE GIVEN LOCATIONS ARE EXACT. CONFIRMATION OF EXISTENCE AND EXACT LOCATION OF ALL SERVICES MUST BE OBTAINED FROM THE INDIVIDUAL UTILITIES BEFORE PROCEEDING WITH CONSTRUCTION.

BM	38-004	1.61 m Conc. pile under B.M. cover, 4 m N. of S.L. of Portage, 2.4 m W. of line of E.L. of Conway St. N. of Portage & 28.1 m N.E. of N.E. Cor. of Pump House S. of Portage
ELEV	235.636 m	
B	ISSUED FOR TENDER	21/02/04 GFC
A	ISSUED FOR CLIENT REVIEW	20/12/21 GFC
No.	REVISIONS	YY/MM/DD BY DATE

MORRISON HERSHFIELD	
DESIGNED BY	ASM
CHECKED BY	GFC
DRAWN BY	DML
APPROVED BY	RPB
RELEASED FOR CONSTRUCTION	
HOR SCALE	1:500
VERT SCALE	GFC
DATE	20/12/15

CONSULTANT FILE NAME	2020287-STAGE 1.dwg
----------------------	---------------------

THE CITY OF WINNIPEG
PUBLIC WORKS DEPARTMENT
ENGINEERING DIVISION

2021 PAVEMENT RENEWALS PROJECT
PORTAGE AVENUE MILL AND FILL
MOORGATE STREET TO ST JAMES STREET

CONSTRUCTION STAGING
STAGE 1 - EASTBOUND LOW
STA 0+790 TO STA 1+510

CITY DRAWING NUMBER	N/A
SHEET OF	04 OF 20
DRAWING NUMBER	04