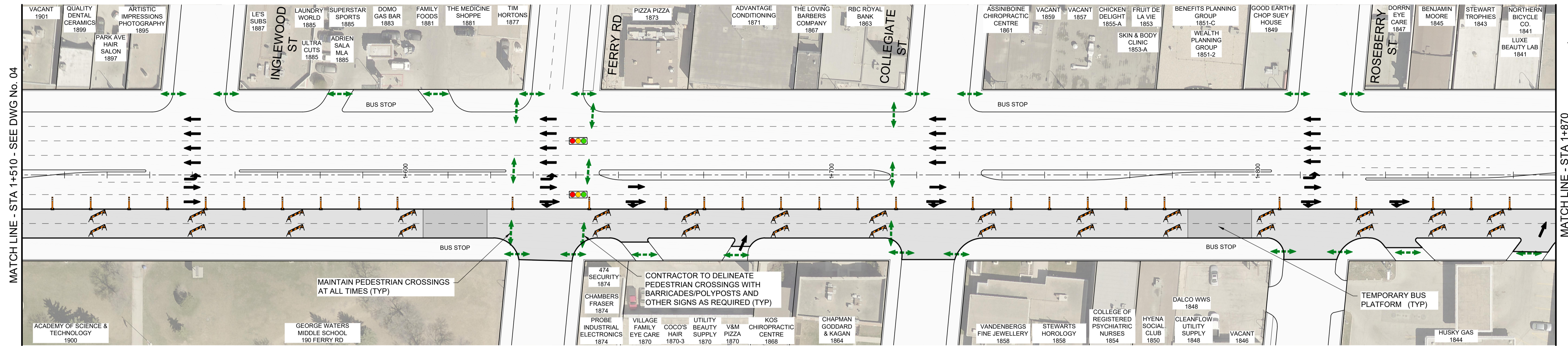
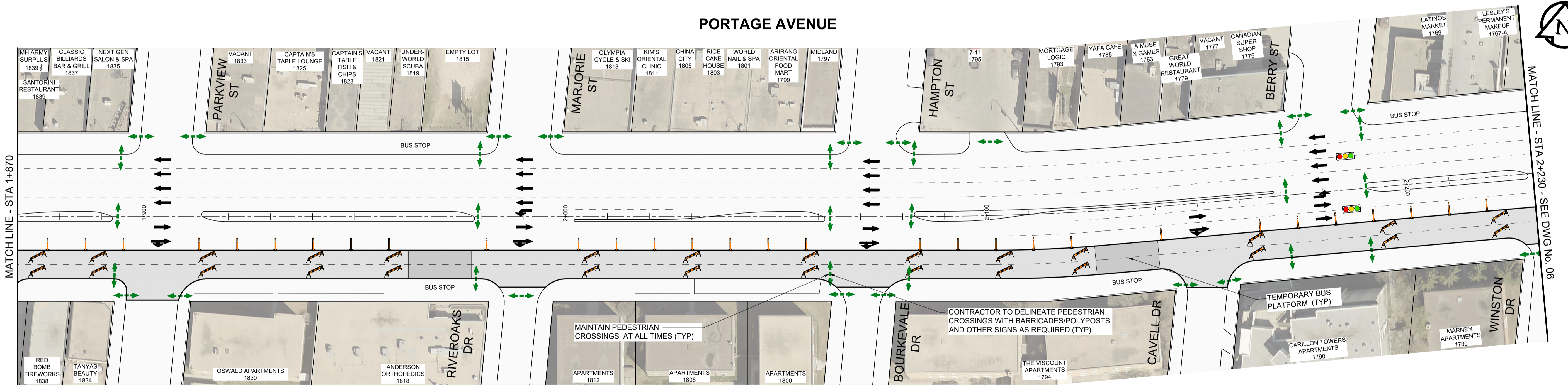


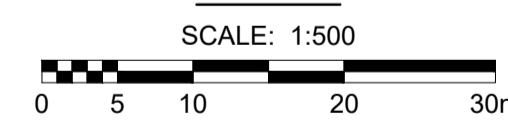
PORTAGE AVENUE



PORTAGE AVENUE



PLAN



LOCATION APPROVED UNDERGROUND STRUCTURES	
SUPR. U/G STRUCTURES COMMITTEE	DATE
NOTE: LOCATION OF UNDERGROUND STRUCTURES AS SHOWN ARE BASED ON THE BEST INFORMATION AVAILABLE BUT NO GUARANTEE IS GIVEN THAT ALL EXISTING UTILITIES ARE SHOWN OR THAT THE GIVEN LOCATIONS ARE EXACT. CONFIRMATION OF EXISTENCE AND EXACT LOCATION OF ALL SERVICES MUST BE OBTAINED FROM THE INDIVIDUAL UTILITIES BEFORE PROCEEDING WITH CONSTRUCTION.	

BM 38-004	38-004	1.61	20/12/15	GFC
ELEV 235.636 m				
Tilt in 7.6 m Conc. pile under B.M. cover, 4 m N. of S.L. of Portage, 2.4 m W. of line of E.L. of Conway St. N. of Portage & 28.1 m N.E. of N.E. Cor. of Pump House S. of Portage				
B	ISSUED FOR TENDER	21/02/04	GFC	
A	ISSUED FOR CLIENT REVIEW	20/12/21	GFC	
No.	REVISIONS	YY/MM/DD	BY	DATE



DESIGNED BY	ASM	CHECKED BY	GFC
DRAWN BY	DML	APPROVED BY	RPB
RELEASED FOR CONSTRUCTION			
HOR SCALE	1:500		
VERT SCALE	GFC		
DATE	20/12/15	DATE	

CONSULTANT FILE NAME
2020287-STAGE 1.dwg

THE CITY OF WINNIPEG
PUBLIC WORKS DEPARTMENT
ENGINEERING DIVISION

2021 PAVEMENT RENEWALS PROJECT
PORTAGE AVENUE MILL AND FILL
MOORGATE STREET TO ST JAMES STREET

CONSTRUCTION STAGING
STAGE 1 - EASTBOUND LOW
STA 1+510 TO STA 2+230

CITY DRAWING NUMBER	N/A
SHEET OF	05 OF 20
DRAWING NUMBER	05