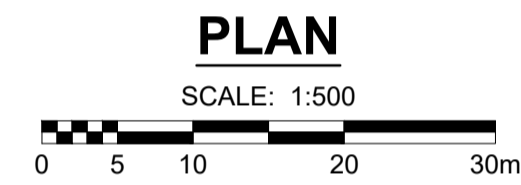
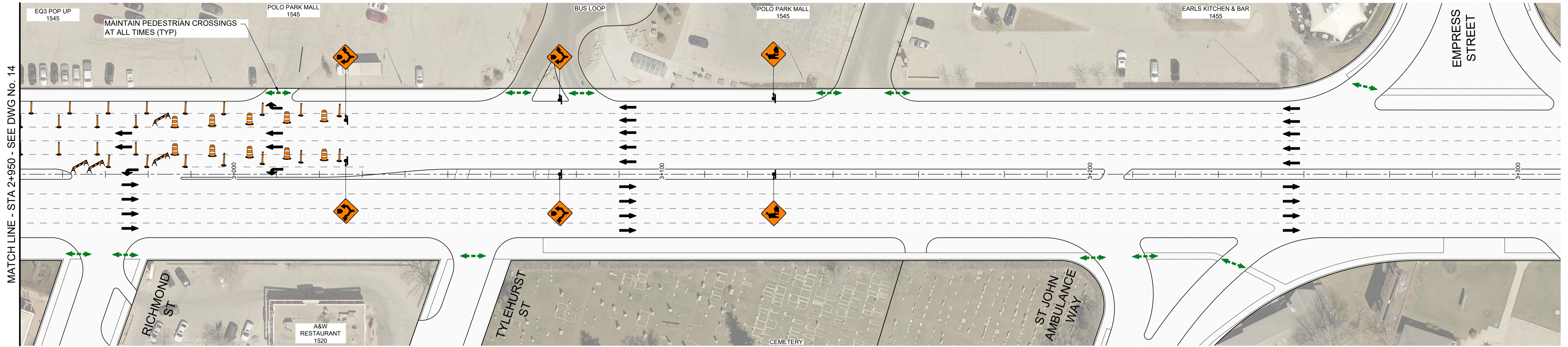


PORTAGE AVENUE



MATCH LINE - STA 2+950 - SEE DWG No. 14

METRIC
WHOLE NUMBERS INDICATE MILLIMETRES
DECIMALIZED NUMBERS INDICATE METRES

TENDER No. 8-2021

LOCATION APPROVED UNDERGROUND STRUCTURES	
SUPR. U/G STRUCTURES COMMITTEE	DATE
NOTE: LOCATION OF UNDERGROUND STRUCTURES AS SHOWN ARE BASED ON THE BEST INFORMATION AVAILABLE BUT NO GUARANTEE IS GIVEN THAT ALL EXISTING UTILITIES ARE SHOWN OR THAT THE GIVEN LOCATIONS ARE EXACT. CONFIRMATION OF EXISTENCE AND EXACT LOCATION OF ALL SERVICES MUST BE OBTAINED FROM THE INDIVIDUAL UTILITIES BEFORE PROCEEDING WITH CONSTRUCTION.	

BM 38-004	Tilt in 7.6 m Conc. pile under B.M. cover, 4 m N. of S.L. of Portage, 2.4 m W. of line of E.L. of Conway St. N. of Portage & 28.1 m N.E. of N.E. Cor. of Pumphouse S. of Portage	
ELEV 235.636 m		
B	ISSUED FOR TENDER	21/02/04 GFC
A	ISSUED FOR CLIENT REVIEW	20/12/21 GFC
No.	REVISIONS	YY/MM/DD BY DATE



DESIGNED BY	ASM	CHECKED BY	GFC
DRAWN BY	DML	APPROVED BY	RPB
HOR SCALE 1:500		RELEASED FOR CONSTRUCTION	
VERT SCALE			
DATE 20/12/15		DATE	

CONSULTANT FILE NAME	2020287-STAGE 3.dwg
----------------------	---------------------

THE CITY OF WINNIPEG PUBLIC WORKS DEPARTMENT ENGINEERING DIVISION	
2021 PAVEMENT RENEWALS PROJECT PORTAGE AVENUE MILL AND FILL MOORGATE STREET TO ST JAMES STREET	
CONSTRUCTION STAGING STAGE 3 - WESTBOUND LOW SIDE STA 2+950 TO EMPRESS ST	
CITY DRAWING NUMBER	N/A
SHEET OF	15 OF 20
DRAWING NUMBER	15