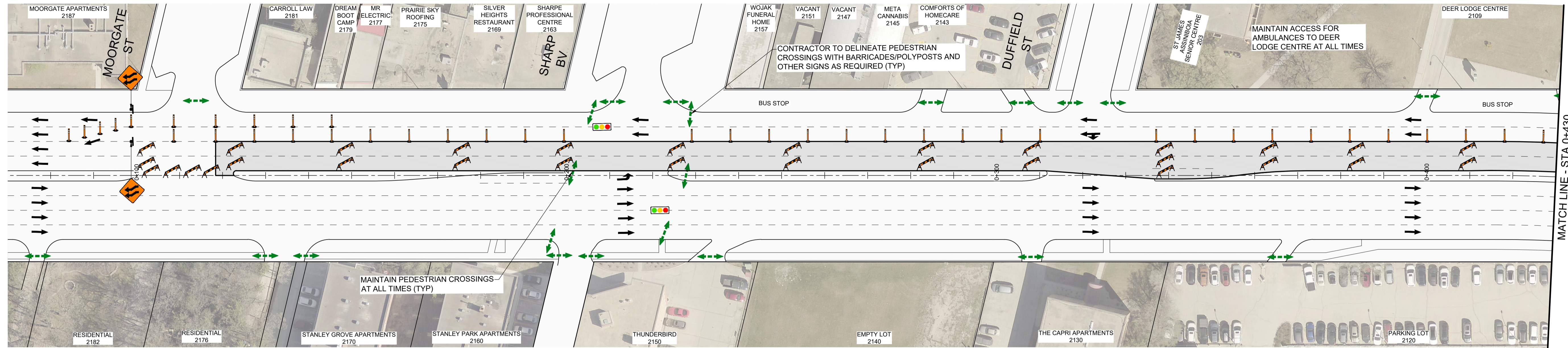
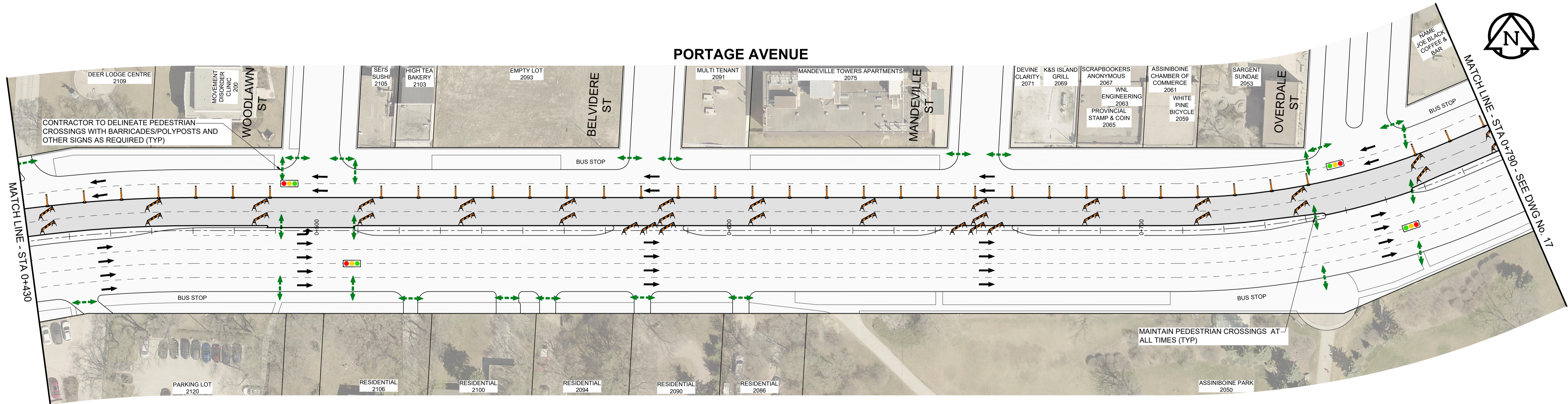


PORTAGE AVENUE



PORTAGE AVENUE



PLAN

SCALE: 1:500



LOCATION APPROVED UNDERGROUND STRUCTURES

SUPR. U/G STRUCTURES COMMITTEE DATE

NOTE: LOCATION OF UNDERGROUND STRUCTURES AS SHOWN ARE BASED ON THE BEST INFORMATION AVAILABLE BUT NO GUARANTEE IS GIVEN THAT ALL EXISTING UTILITIES ARE SHOWN OR THAT THE GIVEN LOCATIONS ARE EXACT. CONFIRMATION OF EXISTENCE AND EXACT LOCATION OF ALL SERVICES MUST BE OBTAINED FROM THE INDIVIDUAL UTILITIES BEFORE PROCEEDING WITH CONSTRUCTION.

BIM	38-004	10ft in 7.6 m Conc. pile under B.M. cover, 4 m N. of S.L. of Portage, 2.4 m W. of line of E.L. of Conway St. N. of Portage & 28.1 m N.E. of N.E. Cor. of Pumphouse S. of Portage
ELEV	235.636 m	
B	ISSUED FOR TENDER	21/02/04 GFC
A	ISSUED FOR CLIENT REVIEW	20/12/21 GFC
No.	REVISIONS	YY/MM/DD BY DATE

MORRISON HERSHFIELD	
DESIGNED BY	ASM
CHECKED BY	GFC
DRAWN BY	DML
APPROVED BY	RPB
RELEASED FOR CONSTRUCTION	
HOR SCALE	1:500
VERT SCALE	
DATE	20/12/15

CONSULTANT FILE NAME	2020287-STAGE 4.dwg
----------------------	---------------------

THE CITY OF WINNIPEG PUBLIC WORKS DEPARTMENT ENGINEERING DIVISION	
2021 PAVEMENT RENEWALS PROJECT PORTAGE AVENUE MILL AND FILL MOORGATE STREET TO ST JAMES STREET	
CONSTRUCTION STAGING STAGE 4 - WESTBOUND HIGH SIDE MOORGATE ST TO STA 0+790	
CITY DRAWING NUMBER	N/A
SHEET	16 OF 20
DRAWING NUMBER	16

TENDER No. 8-2021

METRIC
WHOLE NUMBERS INDICATE MILLIMETRES
DECIMALIZED NUMBERS INDICATE METRES