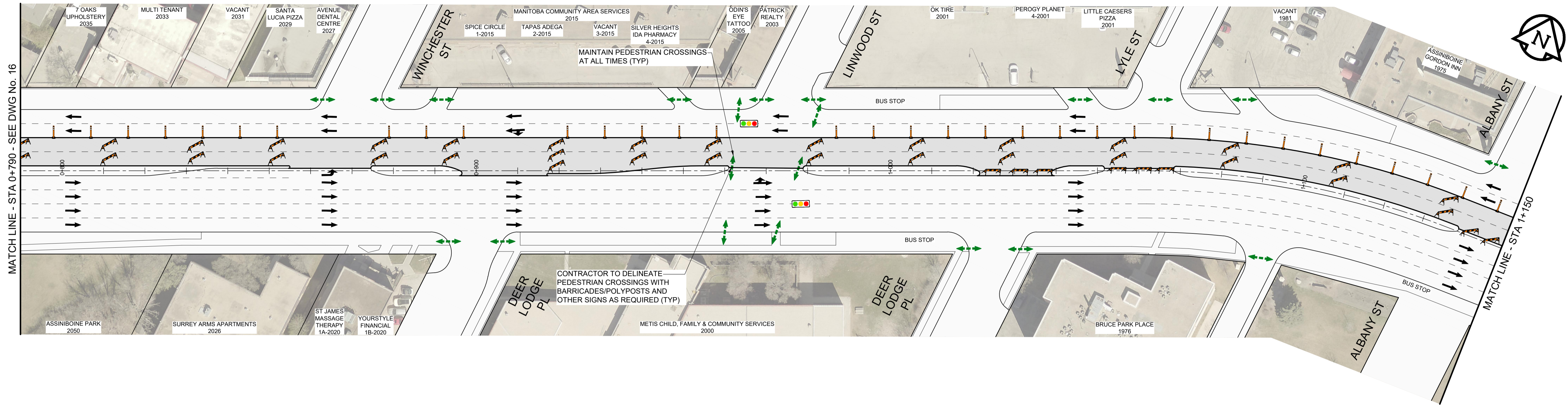
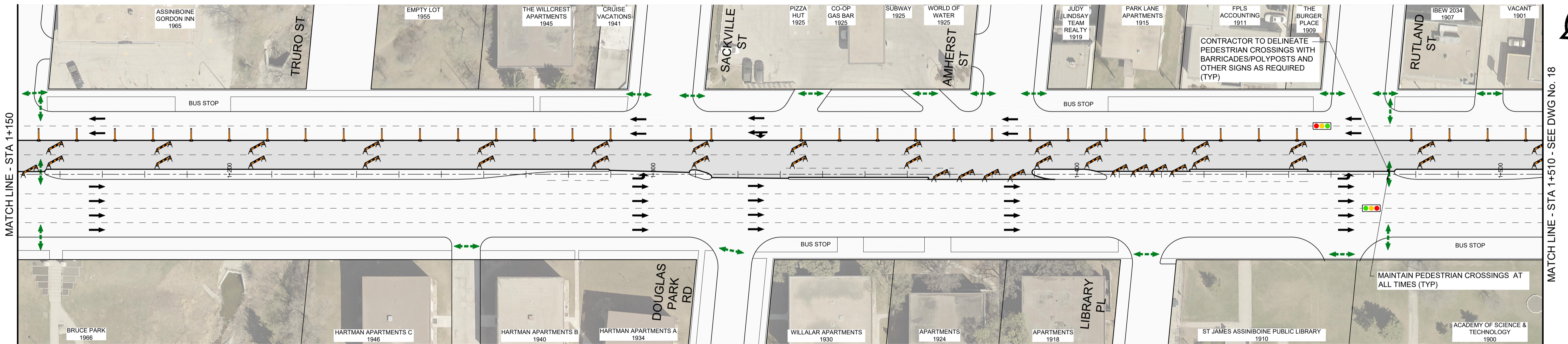


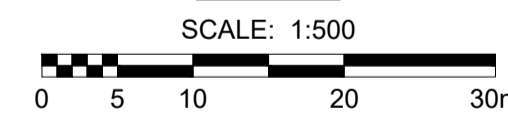
PORTAGE AVENUE



PORTAGE AVENUE



PLAN



LOCATION APPROVED UNDERGROUND STRUCTURES	
SUPR. U/G STRUCTURES COMMITTEE	DATE
<b>NOTE:</b> LOCATION OF UNDERGROUND STRUCTURES AS SHOWN ARE BASED ON THE BEST INFORMATION AVAILABLE BUT NO GUARANTEE IS GIVEN THAT ALL EXISTING UTILITIES ARE SHOWN OR THAT THE GIVEN LOCATIONS ARE EXACT. CONFIRMATION OF EXISTENCE AND EXACT LOCATION OF ALL SERVICES MUST BE OBTAINED FROM THE INDIVIDUAL UTILITIES BEFORE PROCEEDING WITH CONSTRUCTION.	

BM 38-004	Tilt in 7.6 m Conc. pile under B.M. cover, 4 m N. of S.L. of Portage, 2.4 m W. of line of E.L. of Conway St. N. of Portage & 28.1 m N.E. of N.E. Cor. of Pumphouse S. of Portage	
ELEV 235.636 m		
B	ISSUED FOR TENDER	21/02/04 GFC
A	ISSUED FOR CLIENT REVIEW	20/12/21 GFC
No.	REVISIONS	YY/MM/DD BY DATE

DESIGNED BY	ASM	CHECKED BY	GFC
DRAWN BY	DML	APPROVED BY	RPB
HOR SCALE 1:500 VERT SCALE RELEASED FOR CONSTRUCTION		CONSULTANT FILE NAME 2020287-STAGE 4.dwg	
DATE 20/12/15		DATE	

<b>THE CITY OF WINNIPEG</b> PUBLIC WORKS DEPARTMENT ENGINEERING DIVISION	
<b>2021 PAVEMENT RENEWALS PROJECT</b> PORTAGE AVENUE MILL AND FILL MOORGATE STREET TO ST JAMES STREET CONSTRUCTION STAGING STAGE 4 - WESTBOUND HIGH SIDE STA 0+790 TO STA 1+510	
CITY DRAWING NUMBER	N/A
SHEET	17 OF 20
DRAWING NUMBER	17