

- CONSTRUCTION NOTES:**
- ISOLATE MISCELLANEOUS ITEMS IN NEW CONCRETE WORKS AS PER SD-228C.
 - ALL WORK AND MATERIALS TO BE IN ACCORDANCE WITH LATEST REVISION OF THE CITY OF WINNIPEG STANDARD CONSTRUCTION SPECIFICATIONS.
 - LEGAL PLAN AND UNDERGROUND INFORMATION FROM CITY OF WINNIPEG LBS. CONTRACTOR TO VERIFY ALL UNDERGROUNDS IN THE FIELD.
 - CONTRACTOR TO TAKE PRECAUTIONARY STEPS TO AVOID DAMAGE FROM CONSTRUCTION ACTIVITIES TO TREES WITHIN THE LIMITS OF CONSTRUCTION.
 - LOCATION OF EXISTING SERVICES TO BE CONFIRMED IN THE FIELD BY THE CONTRACTOR.
 - INSTALL CB LEADS AT MIN. 1.0% SLOPE OR AS DIRECTED BY THE CONTRACT ADMINISTRATOR.
 - CONTRACTOR TO CONFIRM EXISTING LEAD INVERT ELEVATIONS PRIOR TO INSTALLATION.
 - ALL DIMENSIONS ARE TO BACK OF CURB.
 - LIMITS OF CURB AND SIDEWALK RECONSTRUCTION TO BE FINALIZED IN THE FIELD BY THE CONTRACT ADMINISTRATOR.
 - ADJUST ALL WATER VALVES, MANHOLES, CATCH BASINS, CATCH PITS AND WATER SHUT OFF VALVES TO GRADE.
 - ALL PRIVATE WALKWAYS TO BE ADJUSTED TO NEW SIDEWALK OR TOP OF CURB ELEVATION, AS REQUIRED.
 - STREET LIGHT STANDARDS, HYDRO POLES AND ANCHORS THAT REQUIRE TEMPORARY SUPPORT, REMOVAL OR REPLACEMENT, ARE TO BE DONE AT THE EXPENSE OF THE CONTRACTOR, AS NECESSARY.
 - INSTALL 6 m OF 150 mm SUBDRAIN TO CATCH BASINS IN BOTH DIRECTIONS PARALLEL TO ROADWAY AS PER SD-245 AND CAP ENDS.
 - ALL SERVICES NEED TO BE INSULATED. ADDITIONALLY, ALL CATCH BASINS, MANHOLES AND LEAD PIPES LOCATED WITHIN 2.0 m OF A RESIDENTIAL SERVICE MUST BE INSULATED TO PROTECT THE SERVICE FROM POTENTIAL FUTURE FREEZING.

SYMBOLS LEGEND

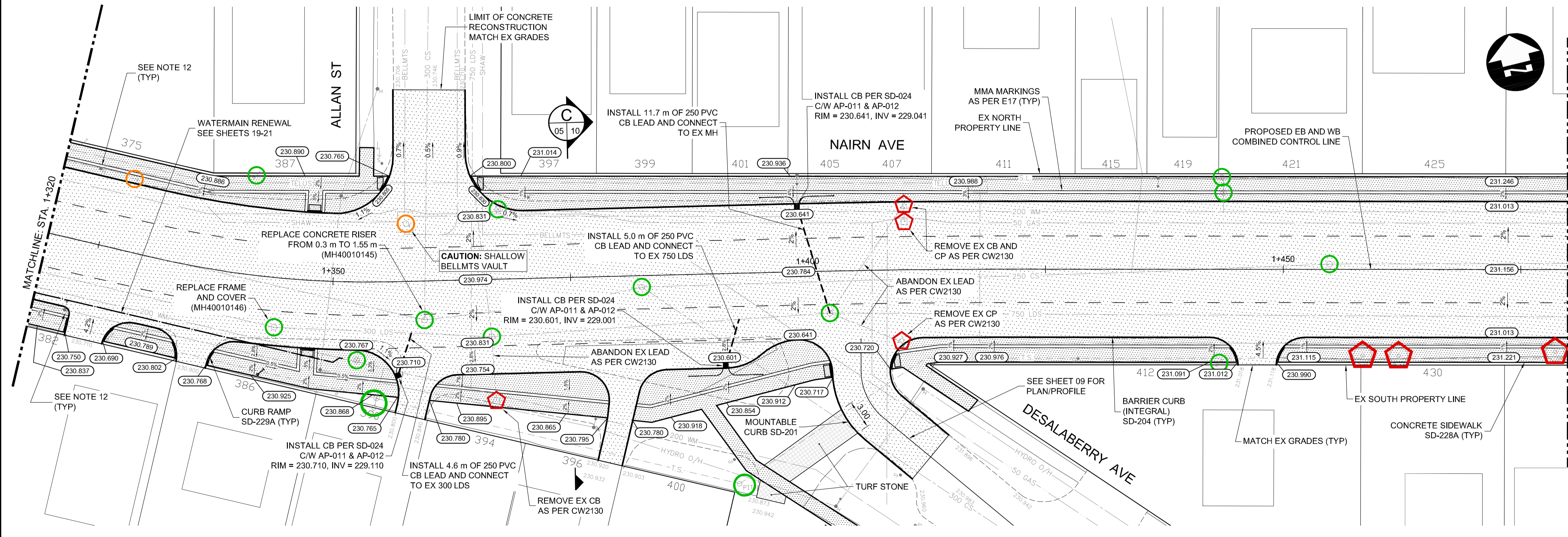
REMOVALS / RELOCATES	
REMOVALS / RELOCATES (BY OTHERS)	
ADJUSTMENTS	
ADJUSTMENTS (BY OTHERS)	
ABANDON	

ABBREVIATIONS:

CONC	CONCRETE		HYDRO MANHOLE
ASP	ASPHALT		TELEPHONE MANHOLE
TYP	TYPICAL		TRAFFIC SIGNAL SPLICE PIT
EX	EXISTING		WATER VALVE
MH	MANHOLE		HYDRANT
WV	WATER VALVE		CURB STOP
EL	ELEVATION		GAS VALVE
CB	CATCH BASIN		HYDRO POLE
CP	CATCH PIT		HYDRO POLE WITH LIGHT
CI	CURB INLET		LIGHT STANDARD
CL	CONTROL LINE		TRAFFIC SIGNAL

SYMBOLS:

	HYDRO MANHOLE
	TELEPHONE MANHOLE
	TRAFFIC SIGNAL SPLICE PIT
	WATER VALVE
	HYDRANT
	CURB STOP
	GAS VALVE
	HYDRO POLE
	HYDRO POLE WITH LIGHT
	LIGHT STANDARD
	TRAFFIC SIGNAL
	SIGNAL CONTROL BOX
	BELLMTS PEDESTAL
	TREE
	IRON PROPERTY BAR
	HYDRO GUY ANCHOR



METRIC

WHOLE NUMBERS INDICATE MILLIMETRES
DECIMALIZED NUMBERS INDICATE METRES

WARNING

IF POWER EQUIPMENT OR EXPLOSIVES ARE TO BE USED FOR EXCAVATION ON THIS PROJECT THE CONTRACTOR MUST:

- NOTIFY THE GAS COMPANY OF THE PROPOSED LOCATION OF EXCAVATION.
- TAKE PRECAUTION TO AVOID DAMAGE TO GAS COMPANY INSTALLATIONS SEE PROVINCIAL REGULATION 210/72 FOR DETAILS.
- OBTAIN EXCAVATION PERMITS PRIOR TO CONSTRUCTION.

**PRELIMINARY ONLY
NOT FOR CONSTRUCTION**

**ES ENGINEERS
GEOSCIENTISTS
MANITOBA**

Certificate of Authorization
Dillon Consulting Limited (MB)
No. 1789 Date: 2022/03/09

150 WM	WATERMAIN	150 WM	CONCRETE ROAD		C PROFILE	
300 LDS	LAND DRAINAGE SEWER	300 LDS	ASPHALT ROAD		NORTH/WEST GUTTER	
250 WWS	WASTE WATER SEWER	250 WWS	CONC ROAD W/ASP OVERLAY		SOUTH/EAST GUTTER	
HYDRO	HYDRO	HYDRO	CONCRETE SIDEWALK		NORTH/WEST MED. GUTTER	
BELLMTS	BELLMTS	BELLMTS	ASPHALT PATH		SOUTH/EAST MED. GUTTER	
100 GAS	GAS	100 GAS	PAVING STONES		NORTH/WEST DITCH	
T.S.	TRAFFIC SIGNALS	T.S.	PAVEMENT REPAIR FABRIC		SOUTH/EAST DITCH	
S.L.	STREET LIGHTS	S.L.	ELEVATION		NORTH/WEST SIDEWALK	
	MANHOLE		PROPERTY LINE		SOUTH/EAST SIDEWALK	
	CATCH BASIN		CURB RAMP			
	CATCH PIT		DETECTABLE TILE			
	EXISTING		PROPOSED		EXISTING	
	LEGEND-PLAN		PROPOSED		LEGEND-PROFILE	

DESIGNED BY	TJH/MRD
DRAWN BY	TJH
CHECKED BY	TS
APPROVED BY	TJP
HOR. SCALE	1:250
VERTICAL	1:10
ISSUED FOR TENDER	22/03/09
NO. REVISIONS	DATE BY

DILLON CONSULTING

PROVINCE OF MANITOBA
M.R. DOUGLAS
Member
22308
2022-03-09

RELEASED FOR CONSTRUCTION

DATE

THE CITY OF WINNIPEG
PUBLIC WORKS DEPARTMENT

2021 REGIONAL STREET PROGRAM
NAIRN AVENUE RECONSTRUCTION AND
WATERMAIN RENEWAL

CITY DRAWING NUMBER
P-3556-05

SHEET
05 OF 21

CONSULTANT PROJECT NUMBER
21-2462

NAIRN AVE - PLAN-PROFILE
(STA. 1+290 TO 1+450)

CONSULTANT DRAWING NUMBER

C:\w\working_directory\projects\2021_400\p\m57051_212462-CF-COON-PLAN-PROFILE.dwg