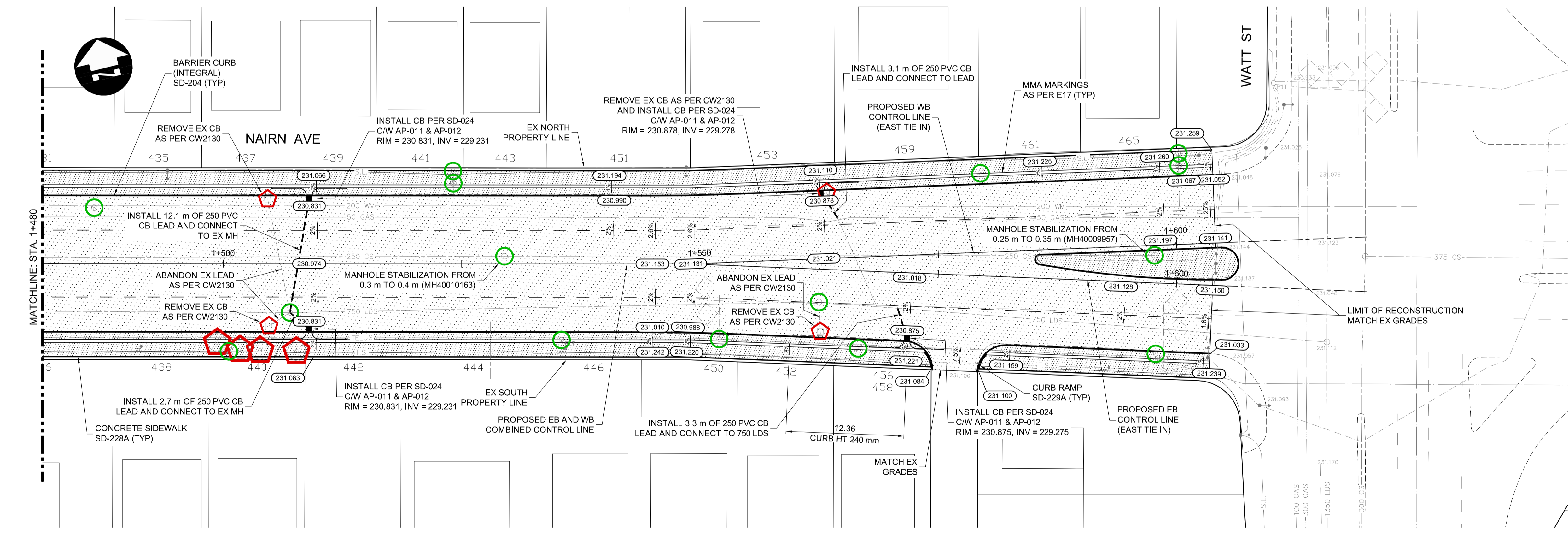


- CONSTRUCTION NOTES:**
- ISOLATE MISCELLANEOUS ITEMS IN NEW CONCRETE WORKS AS PER SD-228C.
  - ALL WORK AND MATERIALS TO BE IN ACCORDANCE WITH LATEST REVISION OF THE CITY OF WINNIPEG STANDARD CONSTRUCTION SPECIFICATIONS.
  - LEGAL PLAN AND UNDERGROUND INFORMATION FROM CITY OF WINNIPEG LBIS. CONTRACTOR TO VERIFY ALL UNDERGROUNDS IN THE FIELD.
  - CONTRACTOR TO TAKE PRECAUTIONARY STEPS TO AVOID DAMAGE FROM CONSTRUCTION ACTIVITIES TO TREES WITHIN THE LIMITS OF CONSTRUCTION.
  - LOCATION OF EXISTING SERVICES TO BE CONFIRMED IN THE FIELD BY THE CONTRACTOR.
  - INSTALL CB LEADS AT MIN. 1.0% SLOPE OR AS DIRECTED BY THE CONTRACT ADMINISTRATOR.
  - CONTRACTOR TO CONFIRM EXISTING LEAD INVERT ELEVATIONS PRIOR TO INSTALLATION.
  - ALL DIMENSIONS ARE TO BACK OF CURB.
  - LIMITS OF CURB AND SIDEWALK RECONSTRUCTION TO BE FINALIZED IN THE FIELD BY THE CONTRACT ADMINISTRATOR.
  - ADJUST ALL WATER VALVES, MANHOLES, CATCH BASINS, CATCH PITS AND WATER SHUT OFF VALVES TO GRADE.
  - ALL PRIVATE WALKWAYS TO BE ADJUSTED TO NEW SIDEWALK OR TOP OF CURB ELEVATION, AS REQUIRED.
  - STREET LIGHT STANDARDS, HYDRO POLES AND ANCHORS THAT REQUIRE TEMPORARY SUPPORT, REMOVAL OR REPLACEMENT, ARE TO BE DONE AT THE EXPENSE OF THE CONTRACTOR, AS NECESSARY.
  - INSTALL 6 m OF 150 mm SUBDRAIN TO CATCH BASINS IN BOTH DIRECTIONS PARALLEL TO ROADWAY AS PER SD-245 AND CAP ENDS.
  - ALL SERVICES NEED TO BE INSULATED. ADDITIONALLY, ALL CATCH BASINS, MANHOLES AND LEAD PIPES LOCATED WITHIN 2.0 m OF A RESIDENTIAL SERVICE MUST BE INSULATED TO PROTECT THE SERVICE FROM POTENTIAL FUTURE FREEZING.
- SYMBOLS LEGEND**
- REMOVALS / RELOCATES (Red pentagon)
  - REMOVALS / RELOCATES (BY OTHERS) (Blue pentagon)
  - ADJUSTMENTS (Green circle)
  - ADJUSTMENTS (BY OTHERS) (Orange circle)
  - ABANDON (Purple square)
- ABBREVIATIONS:**
- CONC CONCRETE
  - ASP ASPHALT
  - TYP TYPICAL
  - EX EXISTING
  - MH MANHOLE
  - WV WATER VALVE
  - EL ELEVATION
  - CB CATCH BASIN
  - CP CATCH PIT
  - CI CURB INLET
  - CL CONTROL LINE
- SYMBOLS:**
- HYDRO MANHOLE
  - TELEPHONE MANHOLE
  - TRAFFIC SIGNAL SPLICE PIT
  - WATER VALVE
  - HYDRANT
  - CURB STOP
  - GAS VALVE
  - GAS POLE
  - HYDRO POLE
  - HYDRO POLE WITH LIGHT
  - LIGHT STANDARD
  - TRAFFIC SIGNAL
  - SIGNAL CONTROL BOX
  - BELLMTS PEDESTAL
  - TREE
  - IRON PROPERTY BAR
  - HYDRO GUY ANCHOR



- METRIC**
- WHOLE NUMBERS INDICATE MILLIMETRES  
DECIMALIZED NUMBERS INDICATE METRES
- WARNING**
- IF POWER EQUIPMENT OR EXPLOSIVES ARE TO BE USED FOR EXCAVATION ON THIS PROJECT THE CONTRACTOR MUST:
- NOTIFY THE GAS COMPANY OF THE PROPOSED LOCATION OF EXCAVATION.
  - TAKE PRECAUTION TO AVOID DAMAGE TO GAS COMPANY INSTALLATIONS SEE PROVINCIAL REGULATION 210/72 FOR DETAILS.
  - OBTAIN EXCAVATION PERMITS PRIOR TO CONSTRUCTION.
- PRELIMINARY ONLY  
NOT FOR CONSTRUCTION**
- ES ENGINEERS  
GEOSCIENTISTS  
MANITOBA**
- Certificate of Authorization  
**Dillon Consulting Limited (MB)**  
No. 1789 Date: 2022/03/09

150 WM	WATERMAIN	150 WM	CONCRETE ROAD	PROFILE	UNDERGROUND STRUCTURES	B.M. ELEV.	DESIGNED BY	TJH/MRD	ENGINEER'S SEAL	<p><b>THE CITY OF WINNIPEG</b> PUBLIC WORKS DEPARTMENT</p> <p>2021 REGIONAL STREET PROGRAM NAIRN AVENUE RECONSTRUCTION AND WATERMAIN RENEWAL</p> <p>CITY DRAWING NUMBER P-3556-06</p> <p>SHEET 06 OF 21</p> <p>CONSULTANT DRAWING NUMBER</p>
300 LDS	LAND DRAINAGE SEWER	300 LDS	ASPHALT ROAD	NORTH/WEST GUTTER	SUPV. U/G STRUCTURES	DATE	DRAWN BY	TJH		
250 WWS	WASTE WATER SEWER	250 WWS	CONC ROAD W/ASP OVERLAY	SOUTH/EAST GUTTER			CHECKED BY	TS		
HYDRO	HYDRO	HYDRO	CONCRETE SIDEWALK	NORTH/WEST MED. GUTTER			APPROVED BY	TJP		
BELLMTS	BELLMTS	BELLMTS	ASPHALT PATH	SOUTH/EAST MED. GUTTER			HOR. SCALE	1:250		
100 GAS	GAS	100 GAS	PAVING STONES	NORTH/WEST DITCH			VERTICAL	1:10		
T.S.	TRAFFIC SIGNALS	T.S.	PAVEMENT REPAIR FABRIC	SOUTH/EAST DITCH			RELEASED FOR CONSTRUCTION			
S.L.	STREET LIGHTS	S.L.	ELEVATION	NORTH/WEST SIDEWALK			DATE			
	MANHOLE		PROPERTY LINE	SOUTH/EAST SIDEWALK						
	CATCH BASIN		CURB RAMP							
	CATCH PIT		DETECTABLE TILE							
EXISTING	LEGEND-PLAN	PROPOSED	EXISTING	LEGEND-PROFILE	PROPOSED	EXISTING	LEGEND-PROFILE	PROPOSED		

LOCATION OF UNDERGROUND STRUCTURES AS SHOWN ARE BASED ON THE BEST INFORMATION AVAILABLE, BUT NO GUARANTEE IS GIVEN THAT ALL EXISTING UTILITIES ARE SHOWN OR THAT THE GIVEN LOCATIONS ARE EXACT. CONFIRMATION OF EXISTENCE AND EXACT LOCATION OF ALL SERVICES MUST BE OBTAINED FROM THE INDIVIDUAL UTILITIES BEFORE PROCEEDING WITH CONSTRUCTION.