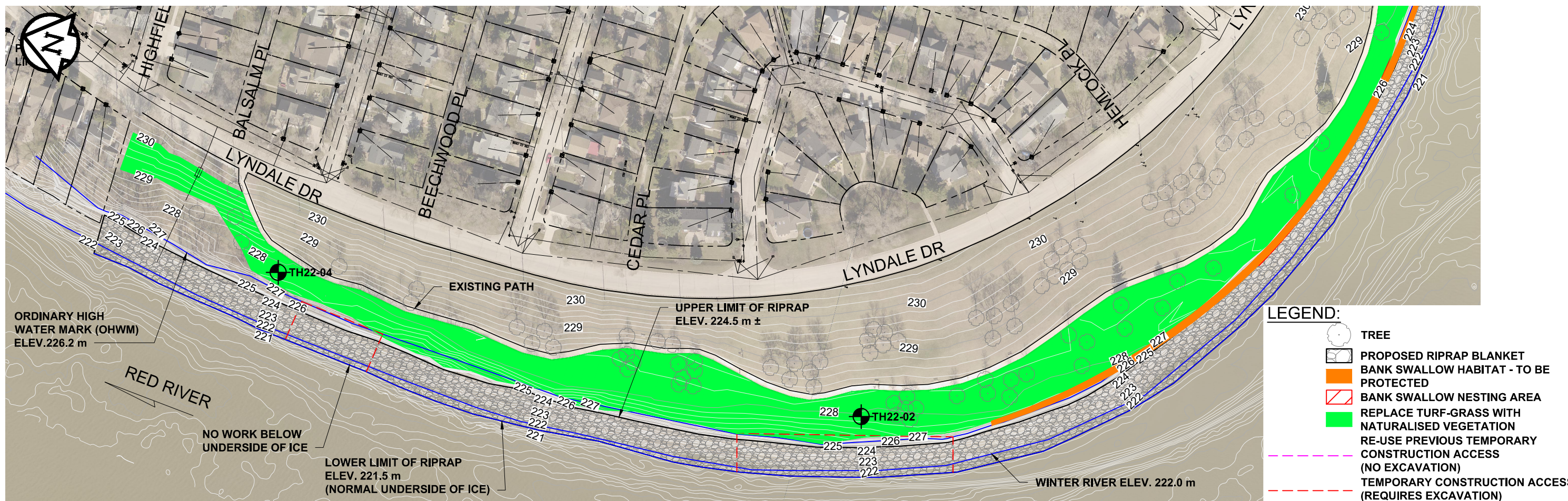
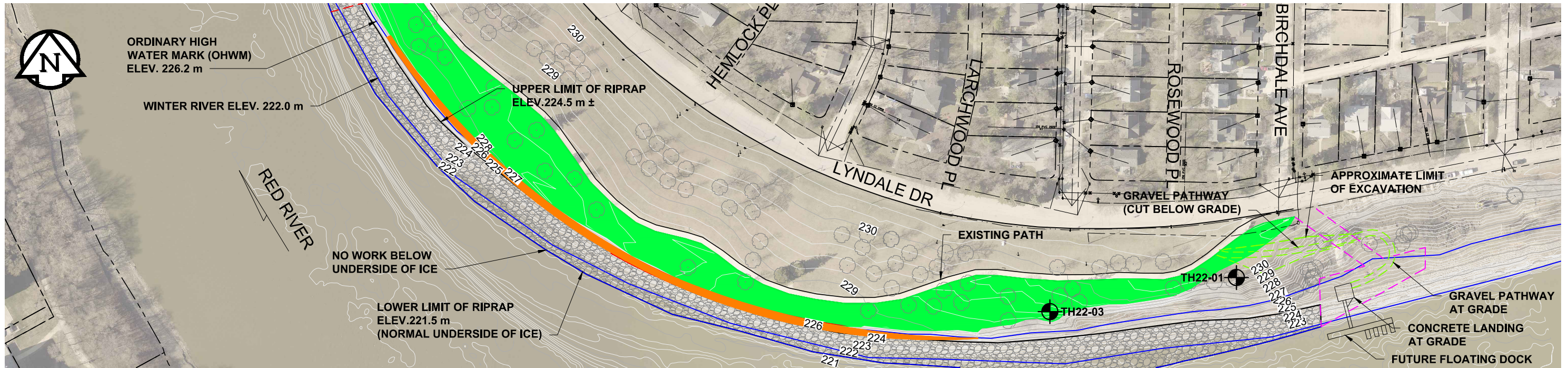


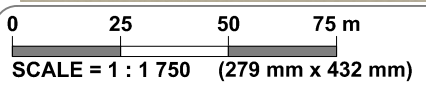
PLOT: 2022-09-23 1:54:16 PM

FILE NAME: Dwg 02 2022-09-21 Lyndale - Highfield to Birchdale 0\_D 0015-046-00 ES.dwg



**LEGEND:**

- TREE
- PROPOSED RIPRAP BLANKET
- BANK SWALLOW HABITAT - TO BE PROTECTED
- BANK SWALLOW NESTING AREA
- REPLACE TURF-GRASS WITH NATURALISED VEGETATION
- RE-USE PREVIOUS TEMPORARY CONSTRUCTION ACCESS (NO EXCAVATION)
- TEMPORARY CONSTRUCTION ACCESS (REQUIRES EXCAVATION)



**ENGINEERS  
GEOLOGISTS  
MANITOBA**

Certificate of Authorization  
**TREK GEOTECHNICAL INC.**  
No. 4877 DATE: \_\_\_\_\_

PROFESSIONAL SEALS

0	ISSUED FOR REGULATORY REVIEW	2022/09/21	CT	MVH	MVH	KMS
REV	DESCRIPTION	YYYY/MM/DD	DRN	DES	ENG	CHK

**TREK  
GEOTECHNICAL**

1712 St. James Street  
Winnipeg, Manitoba  
R3H 0L3

**THE CITY OF WINNIPEG**

LYNDALE DRIVE: HIGHFIELD STREET TO BIRCHDALE AVENUE  
EROSION PROTECTION AND PATHWAY CONSTRUCTION

**SITE PLAN**

PROJECT NUMBER <b>0015 046 00</b>	PROJECT DRAWING NUMBER <b>0015 046 00-02</b>	REV <b>0</b>
--------------------------------------	---	-----------------