

## RECREATION IMPROVEMENT OPTIONS

\*NOT NUMBERED IN ORDER OF PRIORITY

### PATHWAYS

- ① **Sturgeon Creek Pathway (West Side)**  
- 1.8m wide  
- Granular path not plowed in winter
- ② **Sturgeon Creek Pathway (East Side)**  
- Upgrade existing 2.4m wide granular path to 3.5m wide asphalt path
- ③ **Voyageur Park North/South Pathway**  
- 3m wide asphalt path from Saskatchewan Ave. to Hamilton Ave.  
- Possibly will include lighting

### TENNIS, PICKLEBALL, BASKETBALL

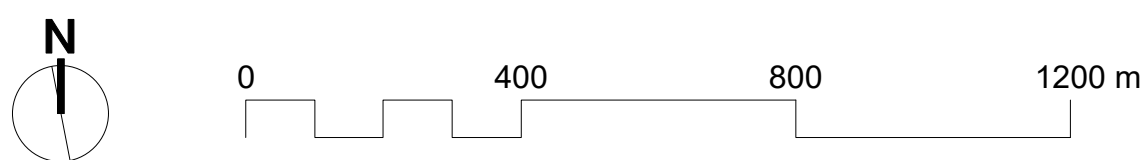
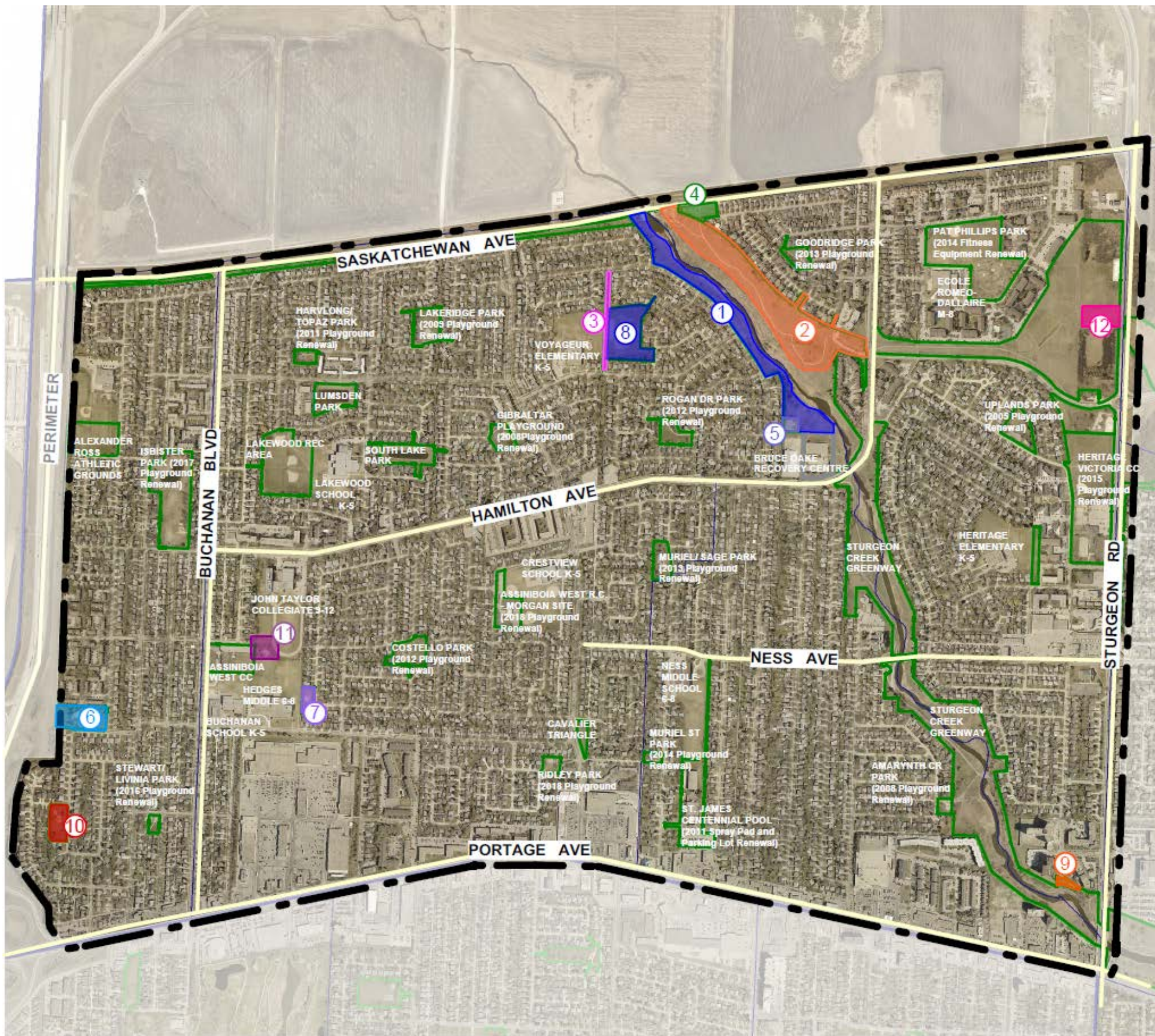
- ④ **Crestview Village Tennis Court Renewal**  
- Two new tennis courts and one basketball court
- ⑤ **Vimy Park Tennis and Pickleball Court**  
- Asphalt overlay and new fencing

### PLAYGROUNDS

- ⑥ **Bernadine Stradford Park Redevelopment**  
- Ramped play structure, swing set, tree planting and site furniture
- ⑦ **Corbett Park Play Structure Redevelopment**  
- Age 0-5 play structure, swing set, tree planting and site furniture
- ⑧ **Voyageur Park Redevelopment**  
- Swing set, picnic table and sandbox
- ⑨ **Kirby/Setter Park Redevelopment**  
- Age 0-5 play structure, swing set, tree planting and site furniture
- ⑩ **Bernadine Crescent Park Redevelopment**  
- Age 5-12 play structure, swing set, tree planting and site furniture

### OTHER AMENITIES

- ⑪ **Assiniboia West CC Wading Pool Upgrade**  
- New spray features and rubberized surfacing, new asphalt pathway from parking lot, increased seating and landscaping
- ⑫ **Sturgeon Road Athletic Fields Off-Leash Dog Park**  
- Fencing, seating, parking, waste bins, notice board and open field area
- A **Outdoor Fitness Equipment**  
Option 1: Individual fitness equipment nodes  
Option 2: Outdoor calisthenics fitness park
- B **New Pathways**  
Option 1: Granular  
Option 2: Asphalt
- C **New Benches**



## ST JAMES WARD RECREATION AMENITIES: STUDY AREA